

Catalogue No. 300.

*Published
about 1895*

W. A. RAYMOLD,

99 FOURTH AVENUE, NEW YORK CITY,

..... MANUFACTURER OF

**MILITARY UNIFORMS
AND EQUIPMENTS**

For Officers and Privates, Military Schools and
all Military Bodies.

TERMS

*Our Terms are: One-third cash with order, balance
If order is sent by a responsible business house,
two weeks from date of invoice.*

*All Small Orders must be accompanied by remittance.
Satisfaction guaranteed to buyers. All our goods
sent.*

A liberal cash discount allowed. Send for special

Separate Catalogues for Bands send upon application

Articles of Uniform listed in this Catalogue

equipment of Officers of the Staff, Field

States Army and the National Guard

Territories.

two
the
Drisleeves
Epa of two
E inches
left-hand
Fate strap to
E; a vertical
the left hip,
book of the
the coat,
terial,
and
at
orn
de, the

Catalogue No. 300.

*Published
about 1895*

W. A. RAYMOLD,

99 FOURTH AVENUE, NEW YORK CITY,

..... MANUFACTURER OF

MILITARY UNIFORMS AND EQUIPMENTS

For Officers and Privates, Military Schools and
all Military Bodies.

TERMS

*Our Terms are: One-third cash with order, balance
If order is sent by a responsible business house,
two weeks from date of invoice.*

*All Small Orders must be accompanied by remittance.
Satisfaction guaranteed to buyers. All our goods
sent.*

*A liberal cash discount allowed. Send for special
Separate Catalogues for Bands send upon application.
Articles of Uniform listed in this Catalogue*

*equipment of Officers of the Staff, Field
States Army and the National Guard
Territories.*

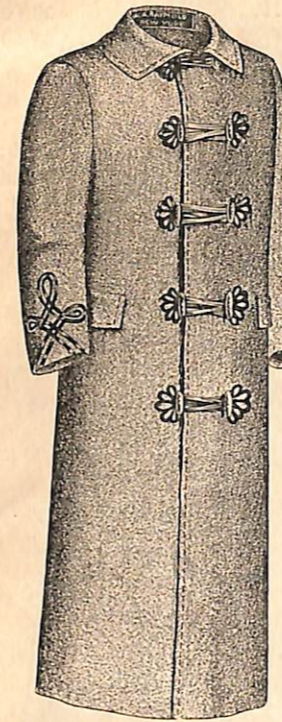
two
the
Drisleeves
Epa of two
E inches
left-hand
Fauc strap to
E; a vertical
the left hip,
book of the
the coat,
terial,
and
at
orn
de, the

INDEX

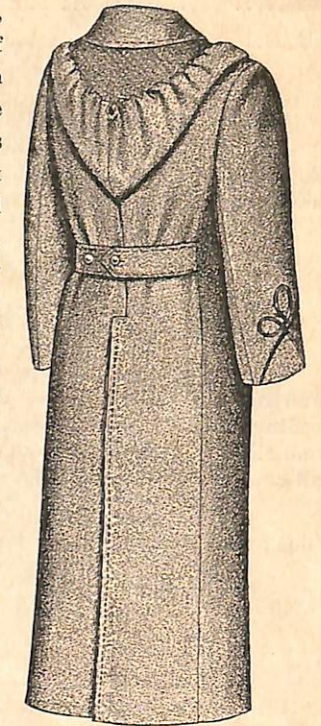
	PAGE		PAGE
Aiguillettes.....	8, 26	Hats.....	5, 18, 19, 20
Baldrics.....	10	Hat Cords.....	22
Bass Drums.....	37	Hats, Campaign.....	5, 19
Bayonet Scabbards.....	31	Helmets.....	5, 6, 16, 17, 18
Belts.....	10, 29, 30	Horse Equipments.....	14, 15
Belts, Officers'.....	10	Huzzar Hats.....	20
Belts, Waist.....	29, 30	Knapsacks.....	30
Belts, Sword.....	10	Knots, Shoulder.....	7, 23, 24
Belts, Webbing.....	29	Leggings, Canvas.....	28
Belt Plates.....	34	Leggings, Leather.....	28
Breast Plates.....	34	Metal Ornaments.....	33, 35
Bugle Cords.....	30	Overcoats.....	1
Campaign Hats.....	5, 19	Overcoat Sling.....	11
Canvas Leggings.....	28	Plates, Belt.....	34
Capes.....	2	Plumes.....	35
Caps.....	8, 20	Pompons.....	35
Cap.....	22	Sabres.....	12
Cap.....	7, 33	Sashes.....	9, 30
Cap.....	31	Scabbard, Bayonet.....	31
Cap.....	5	Shakos.....	19, 20
Cap.....	27	Sergeants' Throgs.....	31
Cap.....	28	Shoulder Knots.....	7, 23, 24, 26
Cap.....	3	Shoulder Scales.....	25, 26
Cap.....	22	Shoulder Straps.....	9
Cap.....	31	Slings, Drum.....	38
Cap.....	37	Spurs.....	9
Cap.....	38	Sticks, Drum.....	33
Cap.....	33	Swords.....	12, 13, 32
Cap.....	6, 25, 26	Sword Belts.....	10, 29
Cap.....	31	Sword Cases.....	11
Cap.....	4	Sword Knots.....	11
Cap.....	36, 38	Throgs, Sergeants'.....	31
Cap.....	33	Trousers.....	2
Cap.....	33	Waist Belts.....	29, 30
Cap.....	15	Webbing for Belts.....	20
Cap.....	8	West Point Chevrons.....	25

UNITED STATES ARMY OVERCOATS.

REGULATIONS.



Front View.



Back View.

For General Officers.—Of dark blue cloth, closing by means of four black silk olives and loops of black silk cord, fifteen-hundredths of an inch in diameter, on each side, down the front, and at the throat by a long loop of same cord, with three knots and two silk slides, fastened at the left side by a silk olive, and closing on the right with the same; around each olive, on the breast, a frogging of black silk cord, seven-hundredths of an inch in diameter, all as per pattern; back a single piece, slit up from bottom, from fifteen to seventeen inches, according to the height of the wearer, and closing at will by buttons and buttonholes cut in a concealed flap; collar of the same color and material as the coat, rounded at the edges, and to stand or fall; when standing to be about five inches high; sleeves loose, of a single piece, and round at the bottom, without cuff or slit; lining woolen, and with facings to correspond in color with the trimmings of the uniform; around the front and lower borders, the edges of the pockets, sleeves, collar, and slit in the back, a flat braid of black silk one-half of an inch wide; cape of the same color and material as the coat, removable at the pleasure of the wearer, and reaching to the cuff of the coat sleeve when the arm is extended; coat to extend down the leg from six to eight inches below the knee, according to height.

For All Other Officers.—A double-breasted ulster of dark blue cloth, lined with dark blue flannel or black Italian cloth, closing by means of four black mohair netted olives and loops of black mohair square cord, one-quarter of an inch in diameter, on each side, down the front, with a frogging of same cord at the end of each loop, and at the throat a long loop of same cord with three knots and two netted mohair slides, fastened at the left side with a netted mohair olive, and closing at the right with the same, as per pattern; the back slit up from the bottom from twenty to twenty-five inches, according to the height of the wearer, and closing at will by buttons and buttonholes placed in a concealed flap; bottom of the skirt nine to twelve inches from the ground; a rolling collar of the same material as the coat, and broad enough when turned up to protect the ears, having a collar loop about four and one-

half inches long and one and one-half inches wide; two horizontal side pockets on the outside, just below the hip, covered with flaps to be worn inside or out; sleeves loose, with cuff or slit; back straps to consist of two straps, each about eight inches long and two inches wide, let into the side seams of back of coat; left-hand strap to have a buttonhole, and the right-hand strap to have two buttons about two inches apart; a vertical slit about six inches long at the side of the left hip, large enough to admit the front sling and hook of the sword-belt; a hood of the same material as the coat, lined with black Italian cloth or other suitable material, made to button around the neck, under the collar, and large enough to cover the head and cap, to be worn at night and in inclement weather. The belt will be worn under the coat, with the sword or sabre outside, the rear sling passing out at the slit at the back.

SEE NEXT PAGE FOR PRICES.

PRICES FOR OVERCOATS.

For General Officers.—With Capes; made strictly regulation, and of cloths as follows:

300.....	\$60 00
301.....	75 00
302.....	
303.....	100 00
304.....	125 00

For All Officers.—Overcoats, same as described, made of heavy beaver cloths, elegantly trimmed, finely finished, and perfect in fit, at following prices:

	Without Hood.	With Hood.
300 Cloth.....	\$30 00	\$33 00
301 ".....	35 00	39 00
302 ".....	40 00	44 00
303 ".....	45 00	50 00
304 ".....	50 00	55 00

Samples of Cloth Furnished.

The insignia of rank on the sleeves to be of flat black mohair braid, one-eighth of an inch in width, as follows: General, five braids, double knot; Colonel, five braids, single knot; Lieutenant-Colonel, four braids, single knot; Major, three braids, single knot; Captain, two braids, single knot; First Lieutenant, one braid, single knot; Second Lieutenant, without braid; Chaplain, without braid.

UNITED STATES ARMY REGULATION CAPES.

For Officers.—A Cape of the same color and material as the coat, and reaching to the tips of the fingers when the arm is extended; a rolling collar of black velvet, three inches broad, rounded at the edges, and closing at the throat with a loop, as described above, may be worn by all officers when not on duty with troops under arms.

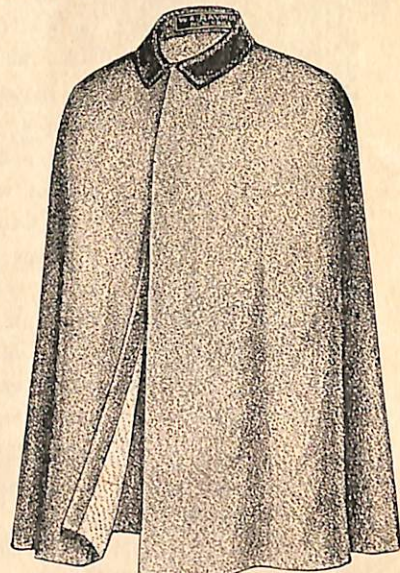
The linings of officers' capes shall be: For the General Staff, dark blue; for Infantry, white; for Artillery, scarlet; for Cavalry, yellow.

Cape, as required by regulation, with black silk velvet collar, lined with flannel of the following colors:

- For Staff.....Dark Blue.
- For Infantry.....White.
- For Artillery.....Scarlet.
- For Cavalry.....Yellow.

PRICES.

300 Cloth.....	\$22 00
301 ".....	25 00
302 ".....	28 00
303 ".....	30 00
304 ".....	35 00



Cape.

UNITED STATES ARMY REGULATION TROUSERS.

For Generals and Officers of the General Staff.—Trousers, made of dark blue indigo dyed broadcloth, without stripes.

PRICES.

	Per Pair.
102 Cloth.....	\$6 75
103 ".....	7 00
104 ".....	8 00
105 ".....	8 50
106 ".....	9 50
200 ".....	11 50
201 ".....	12 50
202 ".....	14 00
203 ".....	16 00

For Line and Field Officers.—Trousers, made from doeskin, regulation color, with cloth stripe 1½ inches wide, welted at edge, and made of color conforming to arm of service.

When ordering, please state style and number of pockets desired

PRICES.

	Per Pair.
204 Cloth.....	\$8 25
205 ".....	9 50
206 ".....	10 50
207 ".....	12 00
208 ".....	13 00
209 ".....	15 00
210 ".....	16 00

SAMPLES OF CLOTH FURNISHED UPON REQUEST.

FULL DRESS COATS FOR OFFICERS.

UNITED STATES ARMY REGULATION.

A double-breasted frock coat of dark blue cloth, the skirt to extend from one-half to three-quarters the distance from the hip joint to the bend of the knee.



For Line Officer.

For a General.—Two rows of buttons on the breast, twelve in each row, placed by fours; the distance between each row five and one-half inches at top and three and one-half inches at bottom; Stand-up Collar, not less than one nor more than two inches in height, to hook in front at the bottom, and slope thence up and backward at an angle of thirty degrees on each side, corners rounded; Cuffs three inches deep, with three small buttons at the under seam; Pockets in the folds of the skirts, with two buttons at the hip and one at the lower end of each pocket, making four buttons on the back and skirt of the coat; Collar and Cuffs to be of dark blue velvet; Lining of the coat, black.

For a Lieutenant-General.—The same as for a General, except that there will be ten buttons in each row on the breast, the upper and lower groups by threes, and the middle groups by fours.



For Field Officer.

For a Major-General.—The same as for a General, except that there will be nine buttons in each row on the breast, placed by threes.

For a Brigadier-General.—The same as for a General, except that there will be eight buttons in each row on the breast placed by pairs.

For a Colonel, Lieutenant Colonel, or Major.—The same as for a General, except that

there will be nine buttons in each row on the breast, placed at equal distances; Collars and Cuffs of the same color and material as the coat.

For a Captain, First or Second Lieutenant.—The same as for a Colonel, except that there will be seven buttons in each row on the breast.

For a Chaplain.—Plain black frock coat, with standing collar; one row of nine black buttons on the breast.

PRICES FOR FULL DRESS COATS.

For General Officers.—Made strictly according to Regulation.

Full Dress Coat, double-breasted, Collar and Cuffs, of fine dark blue silk velvet, buttons as per regulations (see above).

105 Cloth.....	Each, \$25 00
106 ".....	" 30 00
200 ".....	" 35 00
201 ".....	" 40 00
202 ".....	" 45 00

For Line, Field, and Staff Officers.—Dress Coats, made of dark blue broadcloth, double-breasted, with buttons as per regulations (see description). Our coats are of fine custom make, cut to individual measure by military tailors.

102 Cloth.....	Each, \$16 00
103 ".....	" 18 00
104 ".....	" 20 00
105 ".....	" 22 50
106 ".....	" 25 00
200 ".....	" 30 00
201 ".....	" 35 00
202 ".....	" 40 00

SAMPLES OF CLOTH FURNISHED.

UNITED STATES ARMY REGULATION FATIGUE COATS.

Copy of General Orders No. 68, Relating to Fatigue Coats.

HEADQUARTERS OF THE ARMY,
ADJUTANT-GENERAL'S OFFICE,
WASHINGTON, Sept. 29, 1892.

GENERAL ORDERS, }
No. 68. }

II.—By direction of the Secretary of War, paragraph 1767 of the Regulations, as amended by General Orders No. 7, 1890, Adjutant General's Office, is further amended to read as follows:

UNDRESS FOR ALL OFFICERS.

1767. *For marches, fatigue duty, and ordinary wear.*—A sack coat of dark blue cloth or serge; single breasted; standing collar, fastened with hook and eye; coat to close with a flap containing five concealed black buttons and buttonholes; the skirt to extend from one-third to two-thirds the distance from the hip joint to the bend of the knee, according to height of wearer. To be cut to fit the figure *easily*; back in a single piece with curved side seams; a vertical opening in each side at the hip, according to pattern; the sword belt to be worn underneath the coat, the sword hook emerging through the opening in the left side. The shoulder strap to be worn; the insignia of the corps or the number of the regiment on each side of the collar, according to pattern.

Trimmings.—Of lustrous black mohair flat braid, as follows: To be edged all around the bottom, the front edges, the collar, and for six inches upward from the bottom, along both side openings of the skirt, with braid one inch wide. On each side of the breast, five double rows of three-eighths-inch braid, with crow's feet at the outer ends; the crow's feet of the top rows extending nearly to the sleeve seams, the lowest crow's feet to be about six inches apart, according to measure of waist. On each sleeve an *Austrian* knot of three-eighths-inch braid, according to pattern, extending about nine inches upward from the bottom of the cuff; along each back seam a double row of three-eighths-inch braid, ending with crow's feet at top and bottom. At discretion of wearer there may be two or four small outside pockets on the breast, the openings to be concealed by the braid.

When officers are serving in the field, the coat as above described will be worn, except that the braid trimmings may be omitted. During the warm season department commanders may authorize this coat to be worn made of white duck or white flannel, without braid.

BY COMMAND OF MAJOR-GENERAL SCHOFIELD.

R. WILLIAMS,
Adjutant-General.

CIRCULAR 14.

OFFICIAL. H. Q. A., Nov. 12, 1892.

The following decision having been made by the Acting Secretary of War is published to the Army, in connection with G. O. 68, September 29, 1892, from this office, for the information of all concerned:

NUMBERS AND INSIGNIA FOR OFFICERS' UNDRRESS COATS.

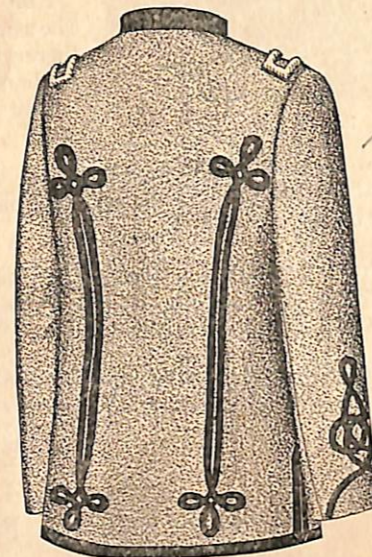
To be embroidered in silver bullion conforming to patterns in the office of the Quartermaster-General; to be three-fourths of an inch in height, and of proportionate width. They will be placed on each side of the coat collar, one and one-half inches from the edge, and one-eighth of an inch from the top of the collar, making the distance between the insignia, or numbers, three inches in the clear. Numbers to be block shaped.

BY COMMAND OF MAJOR-GENERAL SCHOFIELD.

R. WILLIAMS,
Adjutant-General.



Front View.



Back View.

FATIGUE COAT.

For All Officers.—Sack Coat, single breasted, standing collar, with silver embroidered number or insignia on same; made strictly according to regulation as given above, well made and trimmed. Prices as follows:

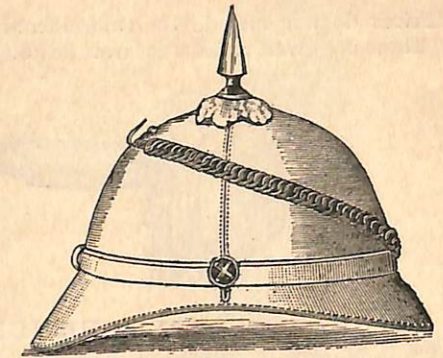
No.	Each.	No.	Each.
102 Cloth	\$12 00	200 Cloth	\$22 00
103 "	15 00	201 "	23 50
104 "	15 50	202 "	25 00
105 "	17 00	203 "	30 00
106 "	20 00		

Nos. 105 to 203, Fatigue Coats, made of serge instead of cloth at same prices.

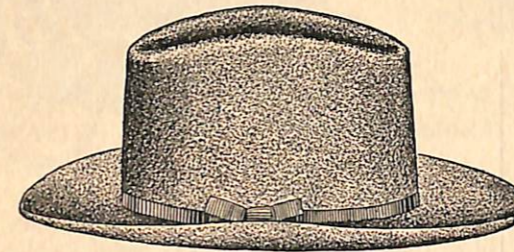
CHAPEAUX, HATS AND HELMETS.



Chapeau. Nos. 400, 401, 402, 403.



Summer Helmet. Nos. 413, 414, 415.



Campaign Hat.



Line Officer's Helmet. Nos. 409, 410, 411, 412.

CHAPEAUX.

No.	Each.
400 Folding Chapeau, of silk plush of fine quality, satin lined; silk side slashings front and back, raised gilt tassels front and back, two black ostrich plumes over top, with regulation gilt strap on right side.....	\$12 00
401 Chapeau, same style as No. 400, but of finer quality, with larger plumes and tassels, etc.....	16 00
402 Chapeau of fine quality, very fine black ostrich plumes over top, fine gold side strap superior quality throughout....	22 00
403 Chapeau of extra fine quality and finish, very elegant black ostrich plumes over top, real gold lace and embroidered bullion side strap, very rich and elegant.....	28 00

CAMPAIGN HATS.

See illustration above.

No.	Each.
418 Campaign Hat, black felt.....	\$3 50
419 Campaign Hat of drab felt, fine quality..	3 00

LINE OFFICERS' HELMETS.

No.	Each.
409 Regulation Line Officer's Helmet, cork body covered with black cloth, with cloth band, gilt eagle, spike, base, chin chain, side buttons, shield hook, and with ventilated sweat.....	\$3 50
410 Regulation Line Officer's Helmet, same as No. 409, but of finer quality.....	5 00
411 Line Officer's Helmet, of extra quality fine black cloth on cork body, goldplated and burnished regulation eagle, spike, base, chin chain, side buttons, etc.....	7 50
412 Line Officer's Helmet, finest black cloth on cork body, satin lined, heavily goldplated and burnished metal eagle, spike, base, chin chain, side buttons, etc., elegant quality.....	9 00

OFFICERS' SUMMER HELMETS.

No.	Price.
413 Cork body covered with fine white cloth, cloth band, gilt spike, base, chin chain, and side buttons.....	\$3 50
414 Helmet, same as No. 413, but with finer gilt trimmings.....	5 00
415 Helmet of extra quality, finest white cloth, satin lined, ventilated sweat, extra fine goldplated trimmings.....	7 50

EPAULETTES.

Prices do not include the embroidered rank devices. These are given under a separate heading. See below.



LIEUTENANTS' EPAULETTES.

No.		Per Pair.
424	Gold Bullion Epaulettes (of French make), with hook fastenings, with fringe of correct size, for Lieutenant.....	\$12 00
425	Gold Epaulettes, same as No. 424, but with goldplated patent fastenings.....	16 50
426	Gold Epaulettes, of extra fine grade, and of superior style, made for Lieutenant..	20 00

CAPTAINS' EPAULETTES.

No.		Per Pair.
427	Gold Epaulettes, same as No. 424, but with fringe of proper size for Captain.....	\$14 00
428	Gold Epaulettes, same as No. 425, but with fringe of proper size for Captain.....	18 00
429	Gold Epaulettes, same as No. 426, but with fringe of proper size for Captain.....	23 00

FIELD OFFICERS' EPAULETTES.

No.		Per Pair.
430	Gold Epaulettes, same as No. 424, but with fringe of proper size for Field Officer..	\$16 00
431	Gold Epaulettes, same as No. 425, but with fringe of proper size for Field Officer...	20 00
432	Gold Epaulettes same as No. 426, but with fringe of proper size for Field Officer...	25 00

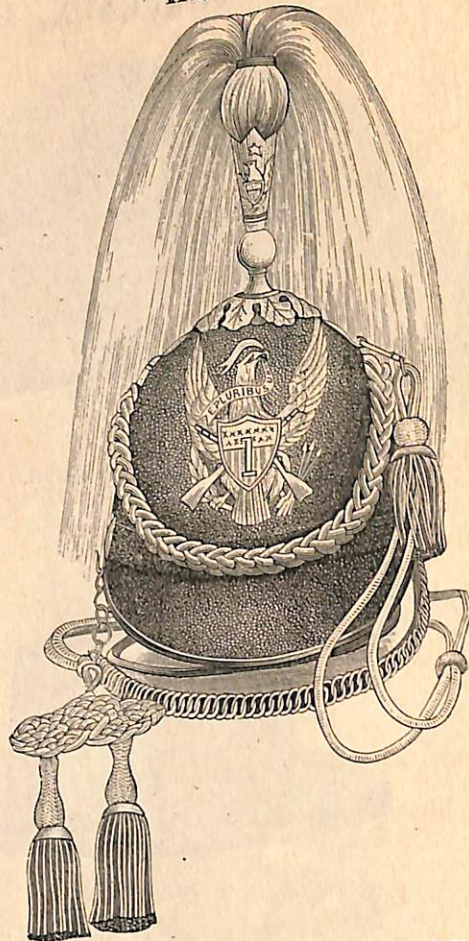
GENERALS' EPAULETTES.

No.		Per Pair.
433	Gold Epaulettes, for General Officer, very elaborate, large bullion pendent fringe as per regulation, with patent fastenings.....	25 00
434	Gold Epaulettes, for General Officer, of rich and elegant quality and finish, with patent fastenings.....	30 00

Embroidered Ornaments and Insignia of Ranks for Epaulettes.

	Per Set.
Silver Bars, for First Lieutenant.....	\$0 75
" " " Captain.....	1 50
Gold Leaves, for Major.....	1 50
Silver " " Lieut. Colonel.....	1 50
" " " Eagle, " Colonel.....	2 50
Silver Stars, for Brig. General.....	2 00
" " " Major ".....	4 00
" " " Lieut. ".....	5 00
Per Pair.	
Embroidered Raised Circles, with number of regiment in centre.....	1 50

HELMETS.



For Artillery, Cavalry, and Mounted Officers of Infantry.

No.		Each.
404	United States Regulation Helmet, cork body, covered with fine black cloth, with gilt thread cord plaits front and back. Helmet cords and tassels. Yak plume, gilt eagle, spike, base, plume socket, side buttons and chin chain....	\$15 00
405	United States Regulation Helmet, cork body, covered with fine black cloth, with gilt wire cord front and back braids and cord with tassels. Gold-plated spike and base, eagle with figure, socket, chain and side buttons. Yak plume of proper color.....	20 00
406	United States Regulation Helmet, cork body, covered with finest black cloth, satin lined, with extra quality gold-plated eagle, spike and base, socket for plume. Chin chain and side buttons. Very fine wire cord and braids. Extra large yak plume of proper color.....	25 00
407	United States Regulation Helmet, superior in quality, triple goldplated metal trimmings, superior quality of wire cords and braids. Very large and handsome yak hair plume. Army standard.....	35 00
408	Helmet same as No. 406, but with real gold wire cord and braids.....	65 00

OFFICERS' SHOULDER KNOTS.



Second Lieutenant.



First Lieutenant.



Captain.

Shoulder Knots of gilt thread cord, with patent fastenings, and with embroidered insignia of rank and number of regiment or corps device :

No.		Per Pair.
435	Second Lieutenant.....	\$4 00
436	First Lieutenant.....	4 50
437	Captain.....	5 00
438	Major.....	5 50
439	Lieutenant-Colonel.....	5 50
440	Colonel.....	7 00

Shoulder Knots of fine gilt wire cord, with patent fastenings well made, with embroidered rank devices and insignia, on fine cloth :

No.		Per Pair.
441	Second Lieutenant.....	\$4 50
442	First Lieutenant.....	5 00
443	Captain.....	5 50
444	Major.....	6 00
445	Lieutenant-Colonel.....	6 00
446	Colonel.....	7 00

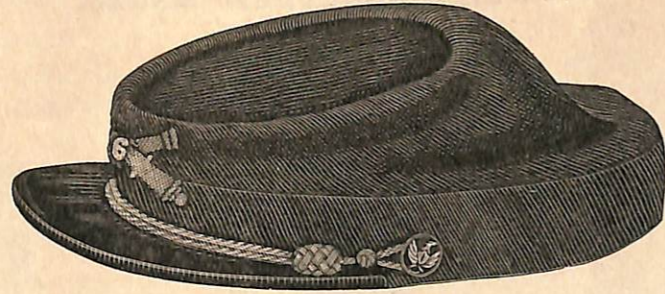
Shoulder Knots, same as listed above, but of best English gold wire cord :

No.		Per Pair.	No.		Per Pair.
453½	Second Lieutenant.....	\$23 00	456½	Major.....	26 00
454½	First Lieutenant.....	24 00	457½	Lieutenant-Colonel.....	26 00
455½	Captain.....	25 00	458½	Colonel.....	28 00

EMBROIDERED CAP ORNAMENTS.

No.		Gilt. Each.	Real Gold. Each.
75	Bullion embroidered crossed rifles, with number of regiment for infantry.....	\$0 80	\$1 50
76	Bullion embroidered crossed sabres, with number of regiment, for cavalry.....	90	1 60
77	Bullion embroidered crossed cannon, with number of regiment, for artillery.....	1 50	2 00
78	Bullion embroidered wreath, with U. S. or initials of State in centre, for generals and staff officers.....	1 00	1 75

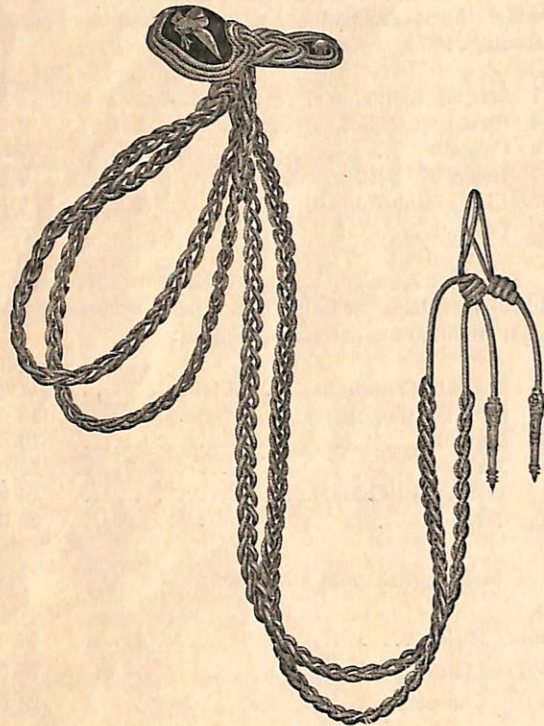
UNITED STATES REGULATION OFFICERS' FATIGUE CAP.



All of extra light weight, and with gossamer tops.

No.	Each.	No.	Each.
420	\$3 50	422	\$6 00
421	4 50	423	7 50

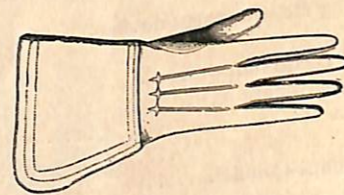
AIGUILLETES.



Prices do not include Shoulder Knots.

No.	Each.
642	\$4 00
643	6 50
644	8 50
645	40 00

GAUNTLETS.

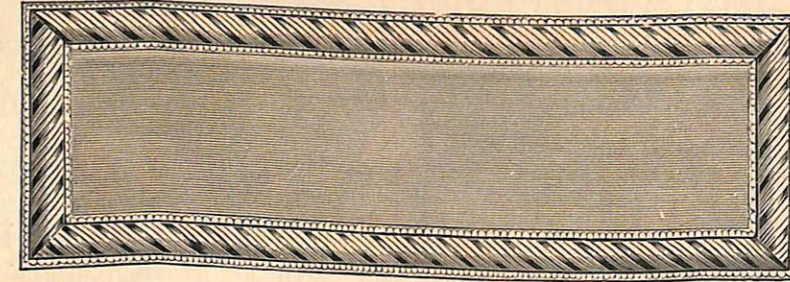


No.	Per Pair.
660	\$2 00
661	3 00
662	2 50
663	4 50
664	6 00

GLOVES.

No.	Dozen Pair.
665	\$2 50
666	4 00
667	6 00
668	10 00
669	\$2 00
670	3 50

SHOULDER STRAPS.



Shoulder Straps of regulation size (four inches long by one and three-eighths wide, and one-quarter inch border), made of good gilt bullion embroidery. at the following prices :

No.	Per Pair.
460	\$2 00
461	2 25
462	2 50
463	3 00
464	3 00
465	3 25
466	2 50
467	3 00
468	3 50
469	4 00

Shoulder Straps, same general style as No. 460, but made of fine gilt bullion, finished in best manner, a fine strap, prices as follows :

No.	Per Pair.
470	\$2 75
471	3 25
472	3 75
473	4 00
474	4 00
475	4 25
476	3 75
477	4 00
478	4 25
479	5 00

Gilt Metal Shoulder Straps, all Ranks.....Per Pair, \$1 00

Shoulder Straps of regulation size, as described in No. 460, but made of real gold bullion, handsomely finished, prices as follows :

No.	Per Pair.
480	\$4 00
481	4 50
482	5 00
483	5 50
484	5 50
485	6 00
486	5 75
487	6 00
488	6 50
489	8 00

Shoulder Straps of extra large size, with wider border, very handsomely embroidered in rich gold bullion, worn principally by U. S. Army officers, prices as follows :

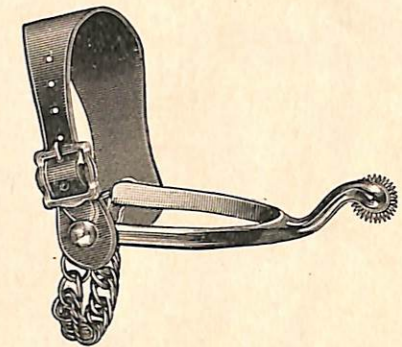
No.	Per Pair.
490	\$6 00
491	6 50
492	7 50
493	8 50
494	8 50
495	10 00
496	9 00
497	9 50
498	10 00
499	12 00

SILK SASHES.



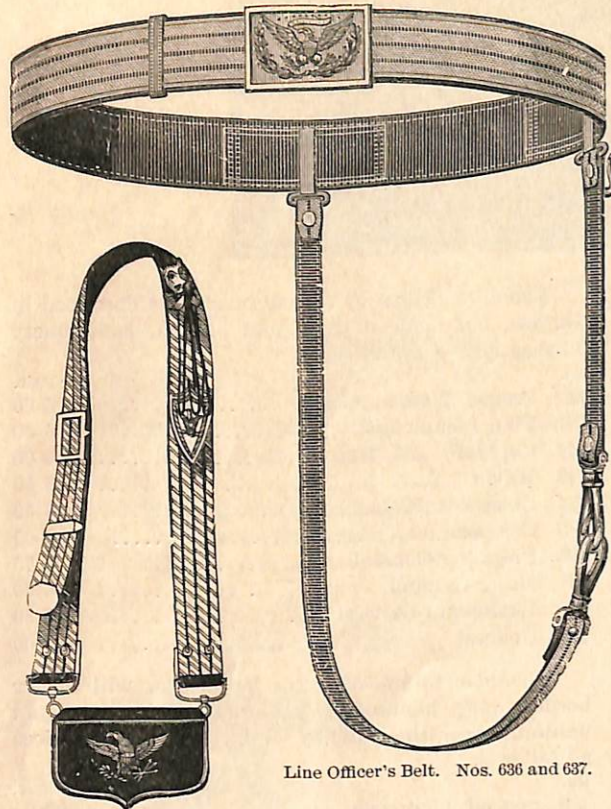
No.	Each.
654	\$8 50
655	10 00
656	2 75
658	8 50
659	10 50
660	30 00

SPURS.



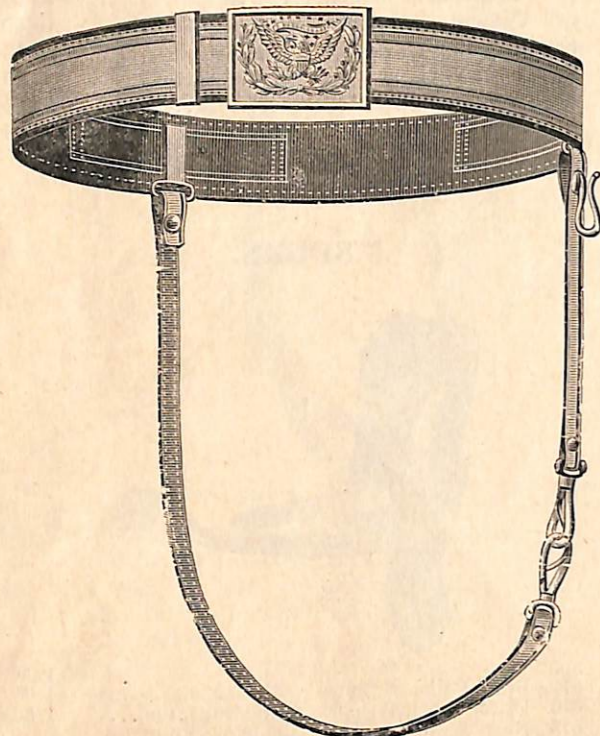
No.	Per Pair.
671	\$1 00
672	1 50
673	3 75

UNITED STATES ARMY REGULATION OFFICERS' BELTS.



Line Officer's Belt. Nos. 636 and 637.

Baldric. Nos. 476, 477 and 478.



Field Officer's Belt. Nos. 631 and 632.

- | No. | Each. |
|---|---|
| 633 | General Officer's Belt, made of red leather, with three rows of gilt bullion embroidery, and trimmed with goldplated belt plate and trimmings. See illustration.. \$18 00 |
| 634 | General Officer's Belt, made of Russia leather, embroidered in real gold, with very rich goldplated trimmings. See illustration 30 00 |
| 635 | General's Belt, of very superior quality, finest gold embroidery, etc..... 50 00 |
| 631 | Field Officer's Belt, of all gilt wire lace, stitched on black enameled leather, trimmed with fine goldplated belt plate and trimmings. See illustration..... 7 00 |
| 632 | Field Officer's Belt, same as No. 631, but faced with real gold wire lace. See illustration..... 16 50 |
| <i>When ordering Infantry Belts, please state whether wanted with White Silk Stripes or Blue.</i> | |
| 636 | Line Officer's Belt, of gilt and silk wire lace, for any arm of service, stitched on black enameled leather, trimmed with fine goldplated belt plate and trimmings. See illustration 7 00 |
| 637 | Line Officer's Belt, same as No. 636, but of real gold wire lace, interwoven with silk..... 16 50 |

OFFICERS' FATIGUE SWORD BELTS.

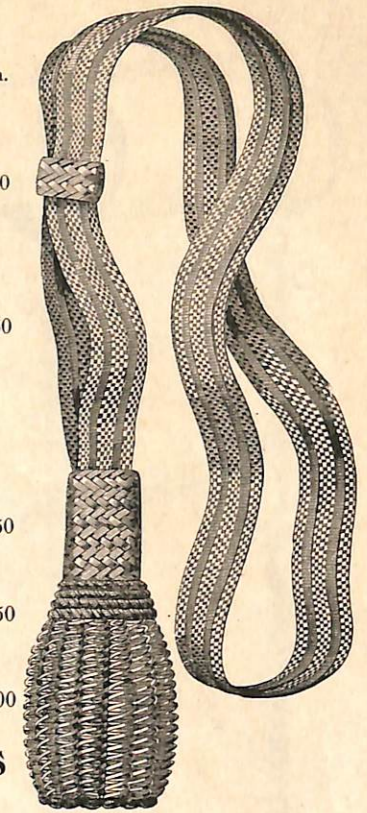
- | No. | Each. |
|-----|---|
| 638 | Belt, of black patent leather, with slings, and with gilt belt plate and trimmings. \$2 25 |
| 639 | Belt, of best enameled leather, doubled, with slings of same material, gold-plated U. S. plate and trimmings . . . 3 50 |
| 640 | Belt, of best enameled leather, doubled, with slings of same material, fine gold-plated plate and trimmings. See illustration..... 4 00 |
| 641 | Belt, of same style as No. 640, but made of very fine "pebble" grain leather..... 5 00 |

BALDRICS.

- | No. | Each. |
|-----|--|
| 476 | Officer's Baldric and Pouch, made of enameled leather, faced with gilt and silk wire lace, gilt mounted. See illustration..... \$10 00 |
| 477 | Baldric, same as No. 476, but faced with all gilt wire lace 10 00 |
| 478 | Same as No. 477, but of real gold wire lace..... 16 00 |

SWORD KNOTS.

- | No. | Each. |
|-----|--|
| 624 | Gilt Bullion Sword Knot, lace strap, good size. See illustration \$2 00 |
| 625 | Gilt Bullion Sword Knot, of medium size, very good, durable quality. See illustration.. 2 50 |
| 626 | Gilt Bullion Sword Knot, of medium size, of rich deep color, will last and keep good color for indefinite period. See illustration... 3 50 |
| 627 | Real Gold Sword Knot, of fine quality..... 6 50 |
| 628 | Real Gold Sword Knot, of superfine quality..... 10 00 |



For all Officers excepting Generals.

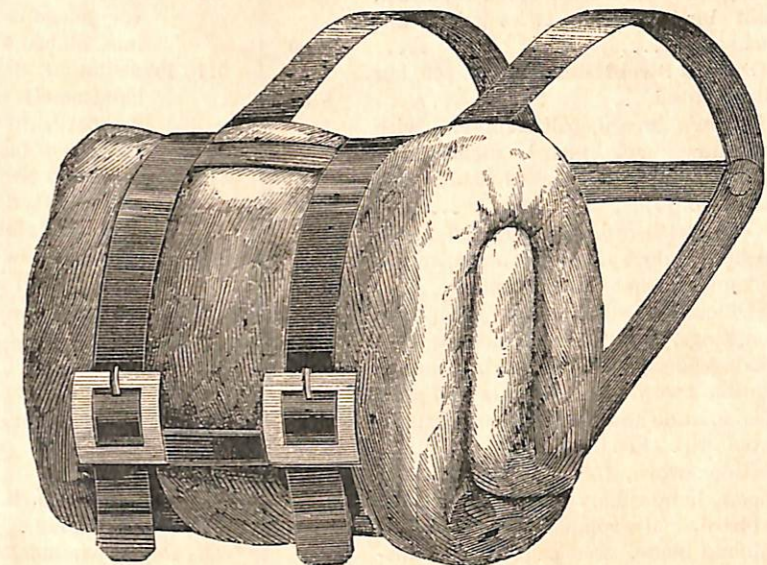
SWORD KNOTS FOR GENERAL OFFICERS.

- | No. | Each. |
|-----|---|
| 629 | Gilt Bullion Sword Knot, with acorn end, for General Officers only. See illustration \$3 50 |
| 630 | Gold Bullion Sword Knot, for General Officers, very rich. See illustration.... 12 00 |

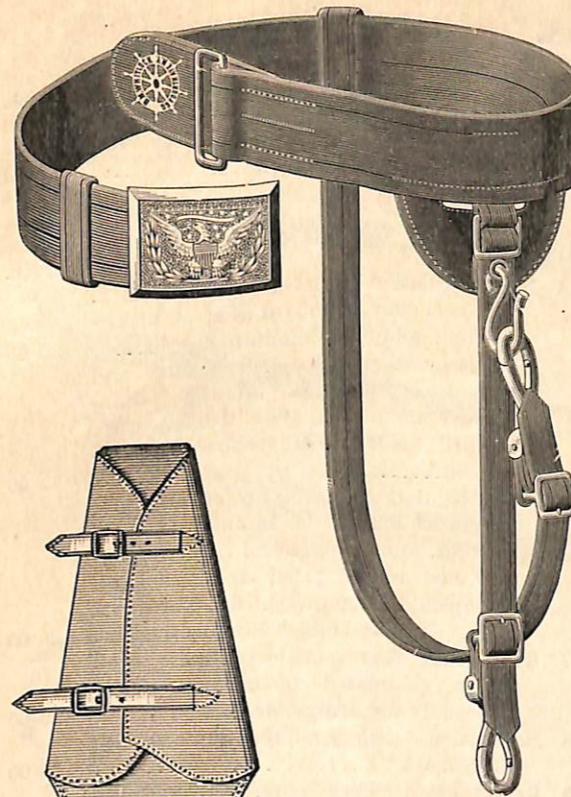
SWORD CASES.

- | | |
|-----|--|
| 479 | Bridle Leather Case for Sword, an almost indispensable article of an officer's outfit. Perfect protection to the sword..... 3 50 |
| 480 | Sword Case, same as No. 479, but lined with chamois skin..... 4 00 |

OVERCOAT SLING.



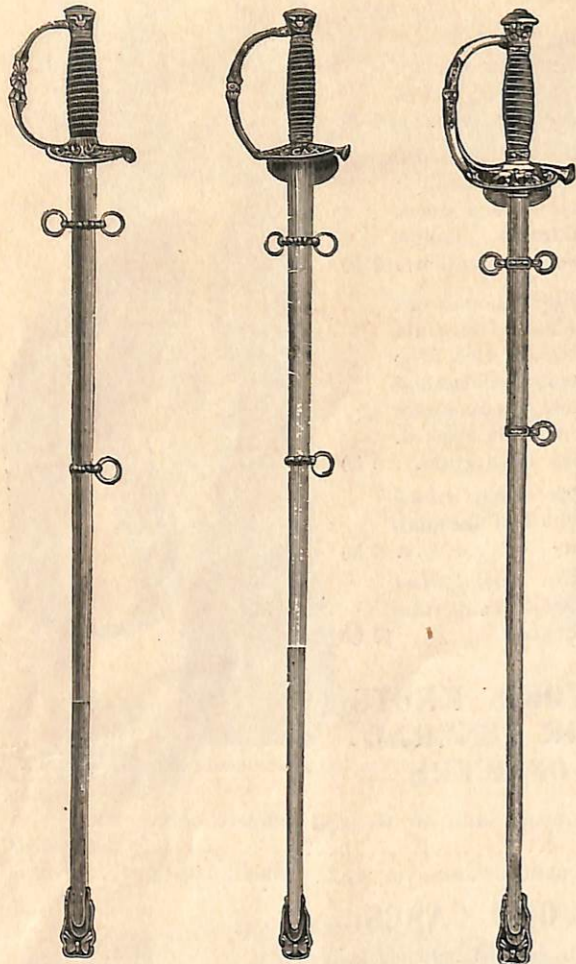
No. 475 Officer's Enameled Leather Overcoat Sling. See illustration. Each, \$4 00



Officer's Fatigue Belt. Nos. 638, 639, 640, 641. See page 10 for prices.

Sword Case.

SWORDS.



Nos. 600, 601. No. 602. Nos. 603, 604, 605.

- | | | |
|-----|---|--------|
| No. | Each | |
| 600 | Line Officer's Sword, brass mounted, no spring back guard, nickeled scabbard, plain blade, leather twist grip. See illustration..... | \$7 00 |
| 601 | Line Officer's Sword, same as No. 600, but gilt mounted..... | 8 50 |
| 602 | Line Officer's Sword, gilt mounted, with stationary back guard, nickelplated scabbard, diamond etched blade. See illustration..... | 9 00 |
| 603 | Line Officer's Sword, gilt mounted, finely finished, etched diamond blade, spring back guard. See illustration..... | 12 00 |
| 604 | Line Officer's Sword, with goldplated mountings, nickelplated scabbard, and elaborate design of (back spring) guard..... | 16 00 |
| 605 | Regulation sword, for generals and staff officers, same as No. 603, but with silverplated grip. See illustration..... | 15 00 |
| 606 | Regulation sword, for generals and staff officers, handsomely mounted, nickeled scabbard, silverplated grip, etched diamond blade. See page 22 for illustrations..... | 25 00 |

- | | | |
|-----|--|--------|
| No. | Each. | |
| 607 | Bronzed Scabbard only. See illustration.. | \$3 00 |
| 608 | Nickeled Steel Scabbard only. See illustration | 3 00 |

SABRES.

- | | | |
|-----|---|---------|
| No. | Each. | |
| 614 | New Regulation Light Sabre, good quality, blade is plain, scabbard of steel, nickelplated, goldplated mountings | \$15 00 |
| 615 | New Regulation Sabre, for cavalry and mounted officers of infantry. Goldplated mountings, twist fishskin grip, etched blade, steel scabbard, nickelplated..... | 17 00 |
| 616 | New Regulation Sabre, for cavalry and mounted officers of infantry. Light weight, fine steel, etched blade, highly polished and nickeled steel scabbard, goldplated mountings, fishskin twist grip. Our finest make. See illustrations. | 20 00 |
| 617 | Extra Fine Sabre, made of finest steel, triple goldplated mountings. Made especially for army officers..... | 22 00 |
| 618 | Regulation Artillery Sabre. Same quality as No. 614..... | 15 00 |
| 619 | Regulation Artillery Sabre. Same quality as No. 615..... | 17 00 |
| 620 | Regulation Artillery Sabre. Same quality as No. 616..... | 20 00 |
| 621 | Regulation Artillery Sabre. Same quality as No. 617..... | 22 00 |

PRESENTATION SWORDS.

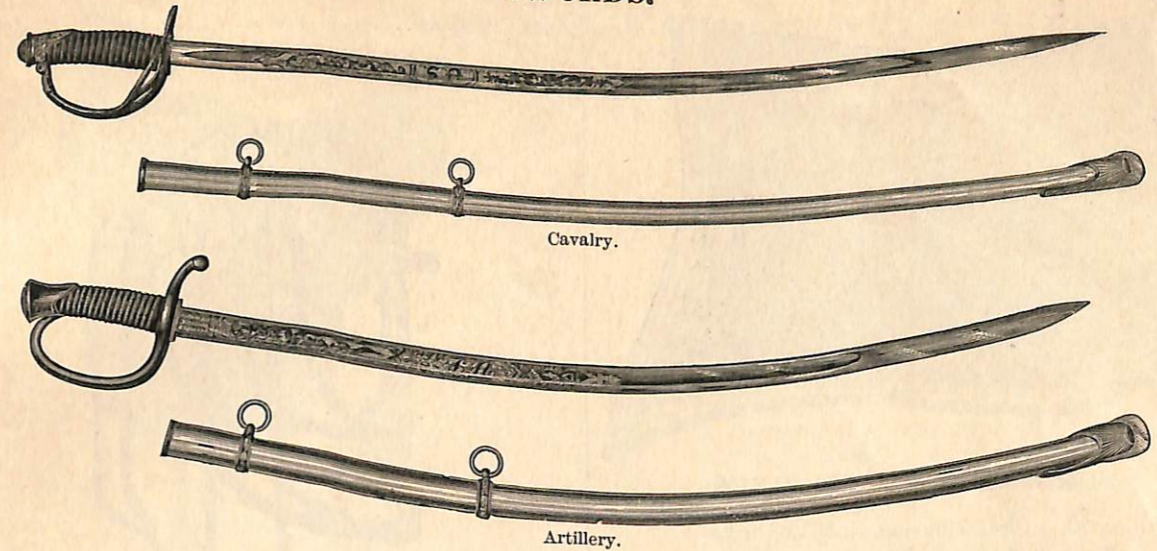
- | | | |
|-----|---|-------|
| No. | Each. | |
| 609 | Presentation Sword, for line officer, nickelplated steel scabbard, goldplated mountings, fishskin twist grip, gold etched diamond blade | 18 00 |
| 610 | Presentation Sword, of handsome design, very elegant guard, goldplated mountings, etched diamond blade..... | 20 00 |
| 611 | Presentation Sword, of popular design, handsomely mounted, nickeled steel scabbard, gold etched diamond blade, silvered or black grip..... | 25 00 |
| 612 | Presentation Sword, of elaborate design, very rich goldplated mountings, handsome gold etched blade, elegant grip... .. | 50 00 |
| 613 | Presentation Sword, of beautiful design, delicate and rich workmanship, elaborate guard, superfine diamond blade... .. | 75 00 |

Photographs of other handsome designs sent upon application.

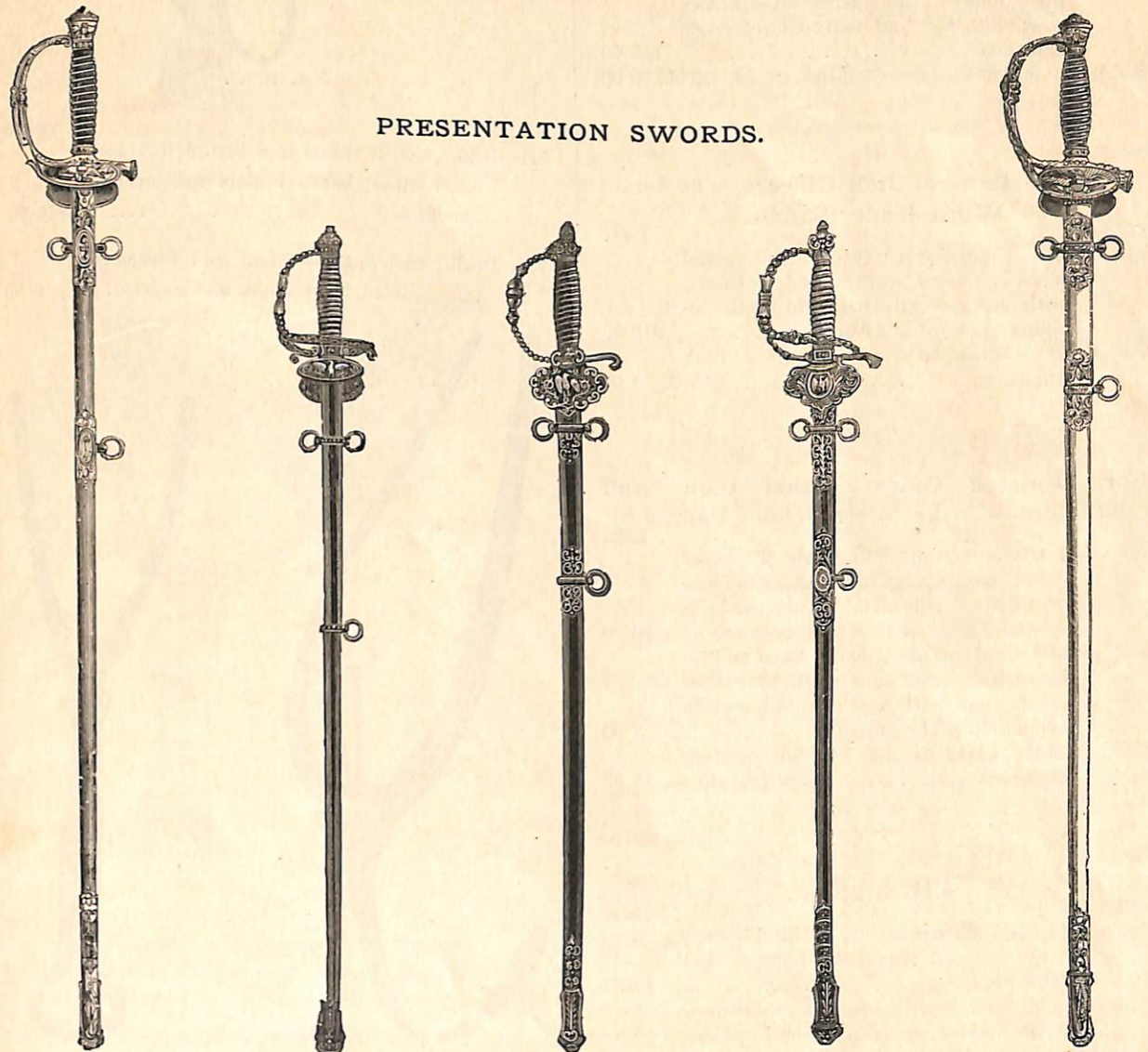
MEDICAL AND PAY DEPARTMENT SWORDS.

- | | | |
|-----|---|---------|
| No. | Each. | |
| 622 | Medical Department Sword, goldplated, extra quality..... | \$18 00 |
| 623 | Pay Department Sword, nickeled scabbard, extra quality..... | 18 00 |

SWORDS.

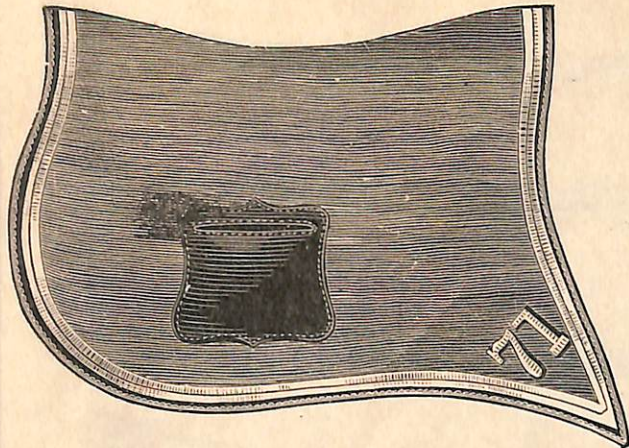


PRESENTATION SWORDS.



No. 609. No. 610. No. 612. No. 613. No. 611.

SADDLE CLOTHS.



FOR GENERAL OFFICERS.

- | | |
|-----|---|
| No. | Each. |
| 763 | Fine Blue Cloth Housing, lined and interlined, finely finished, trimmed with two rows gilt lace and embroidered eagle and stars \$20 00 |
| | Saddle Cloth, of extra fine qualities, \$25 00, \$30 00, 35 00 |

For all General Staff Officers.—To be Worn Under Saddle.

- | | |
|-----|---|
| No. | Each. |
| 764 | Made of Cloth, lined and interlined, bound with enameled leather and bordered with one inch gilt lace, and with insignia as on fatigue cap..... \$12 00 |
| 765 | Saddle Cloths, as No. 764, but of finer qualities.....\$15 00 13 00 |

For Mounted Officers other than Staff Officers.—To be Worn Under Saddle.

- | | |
|-----|---|
| No. | Each. |
| 766 | Felt Cloth, bound with cloth of proper color, with figures of regiment in cloth or nickelplated metal. This grade is according to the U S. Regulations.... \$6 00 |
| 767 | Saddle Cloth, made of cloth, lined and interlined, bound with cloth of proper colors, and with figures of either cloth or nickelplated metal..... 7 00 |
| | Saddle Cloths, same as No. 767, but of finer qualities.....\$9 00, \$10 50, 15 00 |

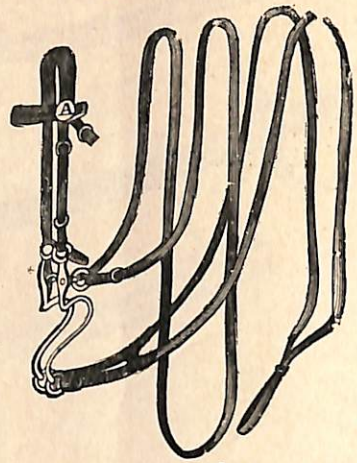
COLLARS.

- | | |
|------|---|
| No. | Each. |
| 770 | Collar and Martingale, raised and bound, brass covered rings and buckles and brass heart..... \$8 50 |
| 770½ | Collar and Martingale, flat and bound, with outside brass rings and buckles and brass heart..... 4 25 |

CRUPPER.

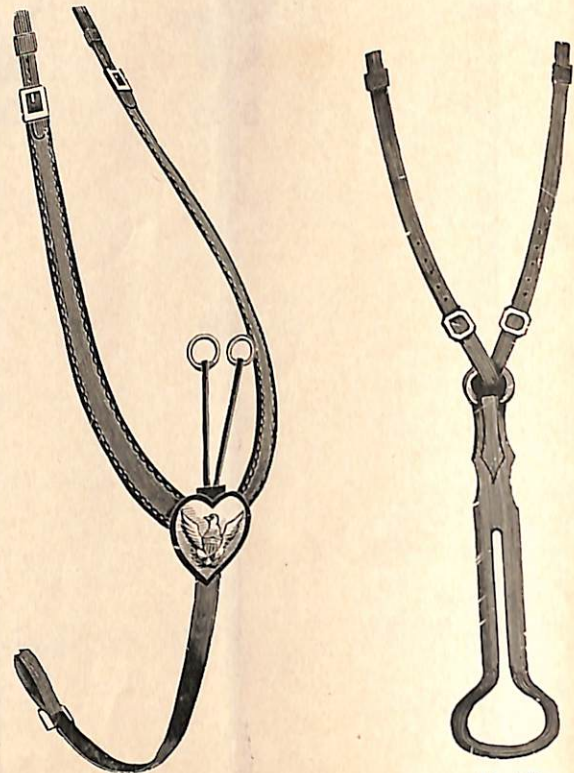
- | | |
|-----|---------------------|
| No. | Each. |
| 773 | Crupper..... \$2 00 |

BRIDLES.



Nos. 771, 772.

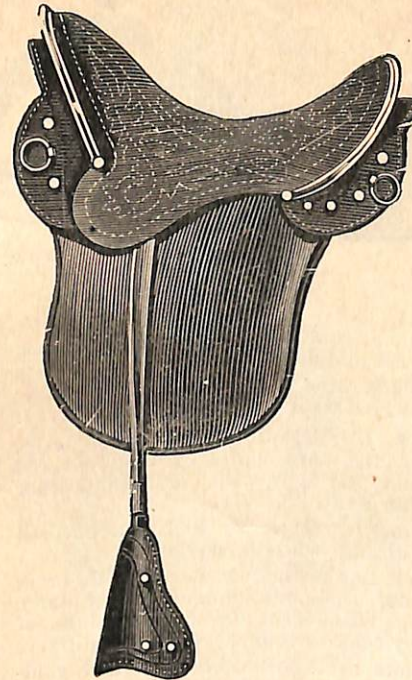
- | | |
|-----|---|
| No. | Each. |
| 771 | Bridle, with raised and bound forepiece and nose band, brassplated bit and buckles..... \$10 00 |
| 772 | Bridle, with flat nose band and forepiece, brassplated bit, buckles and rosettes. . . 6 50 |



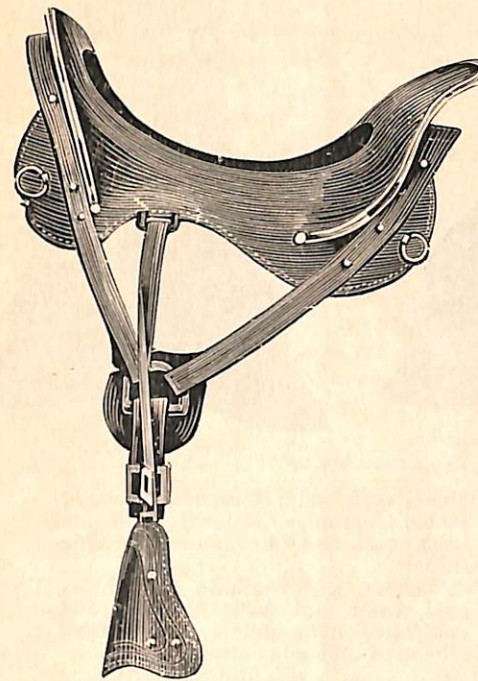
Nos. 770, 770½.

No. 773.

SADDLES.



No. 769.



No. 768.

- | | |
|-----|--|
| No. | Each. |
| 768 | Open Seat Jenifer Saddle, enameled leather, brass mounted, with patent leather stirrups..... \$26 00 |
| 769 | Quilted Seat McClellan Saddle, brass mounted, with patent leather stirrups, 26 00 |

G. A. R. SWORDS.

- | | |
|------|---|
| No. | Each. |
| 599 | Brass mounted sword, plain blade, nickel scabbard, twist leather covered grip... \$5 50 |
| 599a | Sword same as above, but gilt mounted... 7 00 |
| 599b | Sword, gilt mounted, etched diamond blade, nickel scabbard, twist black grip, 8 00 |
- Prices of finer swords will be found on pages 12 and 13.

G. A. R. BELTS.

- | | |
|-----|--|
| 400 | G. A. R. Belts, with slings, made of black or white patent leather..... 2 25 |
| 401 | G. A. R. Belts, with slings, made of black or white enameled leather, gilt metal trimmings..... 3 50 |
- Belts of finer grade than quoted above will be found on pages 10 and 11.
- | | |
|-----|---|
| 410 | Waist belt, of white or black patent leather, with brass G. A. R. plate..... 80 |
| 411 | Belt as 410, but with gilt plate..... 1 00 |
| 412 | Waist belt, of white or black enameled leather, with brass G. A. R. plate..... 1 40 |
| 413 | Belt as 412, but with gilt plate..... 1 60 |

G. A. R. WREATHS.

- | |
|--|
| Gilt embroidered G. A. R. wreath..... 70 |
| Gold embroidered G. A. R. wreath..... 1 50 |

G. A. R. RANK BADGES.



- | |
|---|
| Goldplated and enameled rank badges..... \$0 35 |
|---|

For Hat Cords see page 22.

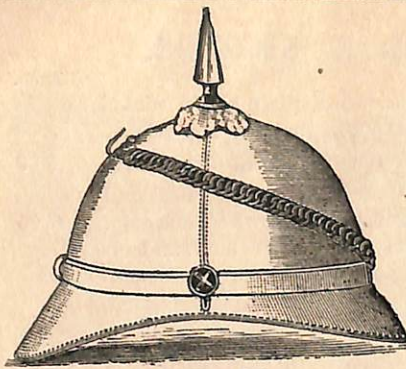
Sashes will be found on page 30.

Manufacturing "exclusively" Uniforms and Equipments, we believe that we can offer unequaled advantages in quality and style, with every consideration as to low prices.

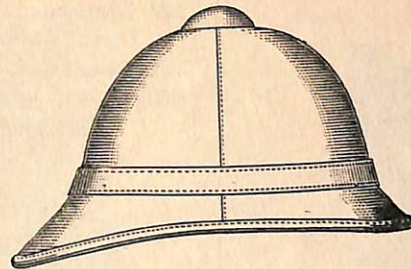
We are making some very handsome Uniforms, consisting of Blouse, braided, in Black Mohair Braid, with trousers to match. Special pattern made for each organization. With this may be worn a shoulder knot of gold or black Mohair cord.

We solicit correspondence from such Posts and Camps as desire to consider the matter of Uniforms, and will confer with you personally or by letter, assuring you of careful attention.

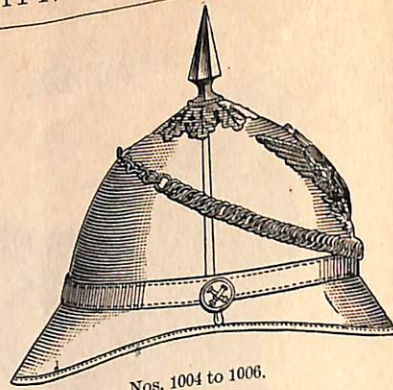
HELMETS.



Nos. 1000 to 1003.



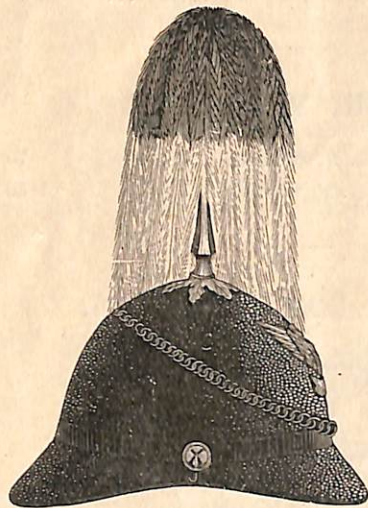
Nos. 1007 to 1008.



Nos. 1004 to 1006.

- | | | |
|----------|--|--------|
| No. 1000 | Helmet, cork body, covered with white drilling, with brass spike and base, chin chain and side buttons. See illustration..... | \$3 00 |
| 1001 | Helmet, same as No. 1,000, but with gold-plated metal trimmings | 3 50 |
| 1002 | Helmet, cork body, covered with fine white cloth, trimmed with brass chin chain, spike and base and side buttons. See illustration..... | 4 00 |
| 1003 | Helmet, same as No. 1002, but with gold-plated trimmings..... | 5 00 |
| 1004 | Helmet, with cork body, covered with white drilling, trimmed with brass spike and base, chin chain and front ornament. See illustration..... | 3 50 |

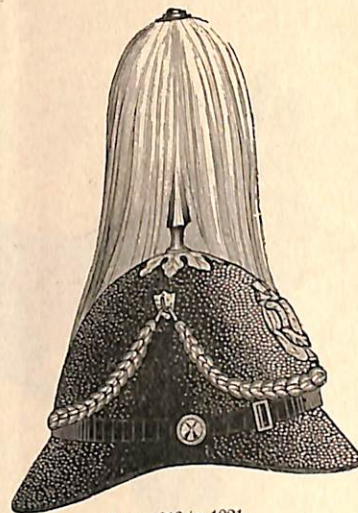
- | | | |
|----------|--|--------|
| No. 1005 | Helmet, same as No. 1004, but trimmed with goldplated trimmings..... | \$4 00 |
| 1006 | Helmet, same as No. 1004, but cork body, covered with fine white cloth..... | 4 50 |
| 1007 | U. S. Regulation Helmet, cork body, covered with white drilling, covered ventilator top, with enameled leather chin strap..... | 1 75 |
| 1008 | Helmet, same as No. 1007, but covered with fine white broadcloth..... | 3 00 |
| 1012 | Black felt helmet, trimmed with brass front ornament, chin chain and plume top, with extra fine feather plume of any color or colors. See illustration.... | 6 00 |
| 1013 | Helmet, same as No. 1012, but with gold-plated metal trimmings..... | 6 50 |



Nos. 1012 to 1015.



Nos. 1024 to 1026.

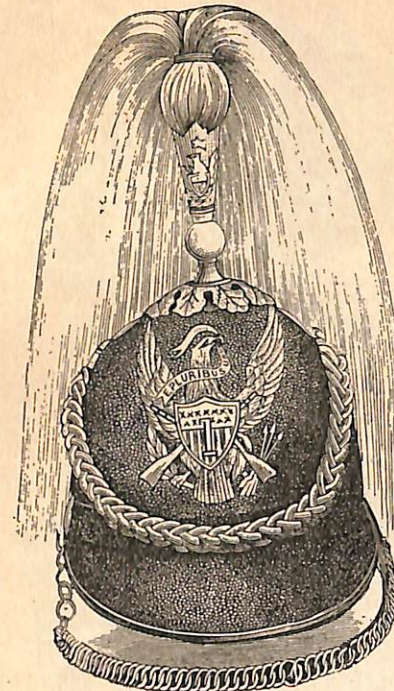


Nos. 1016 to 1021.

- | | | |
|----------|---|------|
| No. 1014 | Helmet, with cork body, covered with fine broadcloth of any color, with brass spike and base, plume top and chin chain. See illustration..... | 7 00 |
| 1015 | Helmet, same as 1014, but goldplated trimmings..... | 7 50 |
| 1016 | Black felt helmet, with fountain hair plume, brass spike plume, front ornament, with leather chin strap and side buttons, with front and back braid of worsted cord of any color. See illustration..... | 2 50 |
| 1017 | Helmet, same as No. 1016, but with gold-plated metal trimmings instead of brass..... | 3 00 |
| 1018 | Helmet, same as No. 1016, but body of cork, covered with fine broadcloth of any color. See illustration..... | 5 25 |

- | | | |
|----------|---|------|
| No. 1019 | Helmet, cork body, cloth covered, gold-plated trimmings, worsted front and back braid, and hair plume. See illustration..... | 5 50 |
| 1020 | Felt helmet, with fountain hair plume, gold front and back braided cord, goldplated spike plume socket, front ornament and side buttons | 4 50 |
| 1021 | Helmet, same as No. 1020, but with gold wire front and back braid..... | 6 00 |
| 1024 | Black felt helmet, brass spike and base, brass eagle and front ornament, brass side buttons and side hook. See illustration..... | 3 75 |
| 1025 | Helmet, same as No. 1024, but with gold-plated trimmings instead of brass..... | 4 25 |
| 1026 | Helmet, with cork body, with goldplated trimmings, same as No. 1025..... | 4 75 |

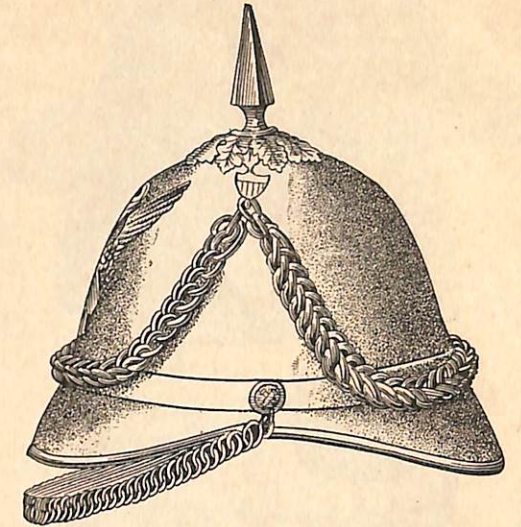
HELMETS.



Nos. 1008 to 1011.

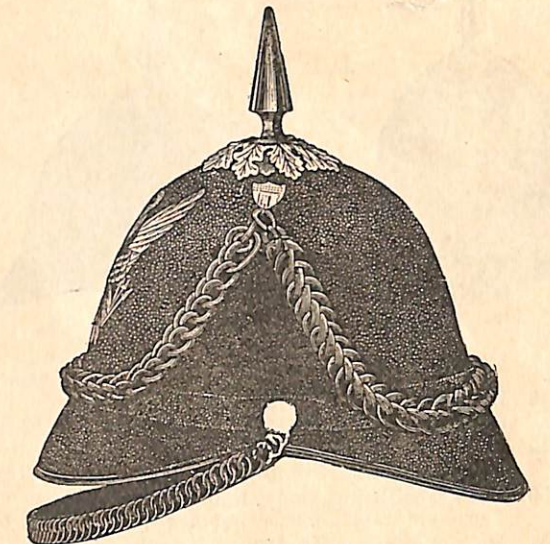
- | | | |
|----------|--|--------|
| No. 1008 | Black felt helmet, trimmed with worsted front and back braid of any color, very elegant. "Yak" hair plume, officer's pattern. Brass chin chain, plume socket and front ornament..... | \$6 25 |
| 1009 | Helmet, same as No. 1008, but with gold-plated metal trimmings | 6 75 |
| 1010 | Helmet, same as No. 1008, but with cork body, covered with black, blue, or any other color of fine broadcloth..... | 7 00 |
| 1011 | Helmet, same as 1009, but with cork body, covered with any color of broadcloth and with same goldplated trimming.... | 7 50 |
| 1031 | Black felt Helmet, with worsted front and back braid of any color, brass spike and base, brass chin chain and side buttons, and brass front ornaments. See illustrations..... | 4 25 |
| 1032 | Helmet same as No. 1031, but with gold-plated metal trimmings. See illustration..... | 4 75 |
| 1033 | Helmet, cork body covered with cloth, trimmed same as No. 1031 | 5 00 |
| 1034 | Helmet, cork body covered with fine broadcloth, with goldplated trimmings and worsted front and back braided cord as described in No. 1031 | 5 50 |
| 1035 | Black felt Helmet, with gold front and back braided cord, goldplated chin chain, spike and base, and front ornament. See illustration..... | 5 25 |
| 1036 | Helmet same as No. 1035, but made of cork and covered with fine broadcloth. See illustration..... | 6 00 |

- | | | |
|----------|--|--------|
| No. 1037 | Helmet with cork body covered with fine broadcloth, with extra fine gold wire braided front and back cord, goldplated front ornament, spike, base and chin chain. See illustration | \$6 75 |
|----------|--|--------|



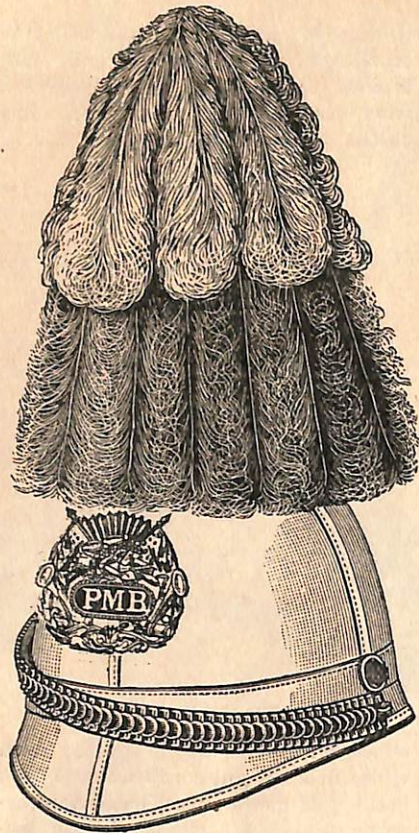
Nos. 1038 to 1040.

- | | | |
|----------|--|--------|
| No. 1038 | Helmet with cork body covered with white drilling, gilt cord front and back braid, gilt metal spike, base, front ornament, and chin chain. See illustration..... | \$5 00 |
| 1039 | Helmet same as 1038, but of cork covered with fine white cloth; same trimmings as No. 1038. See illustration..... | 6 00 |
| 1040 | Helmet, cork body covered with fine white broadcloth, with goldplated spike and base, front ornament and chin chain, and with superfine gilt wire front and back braided cord. See illustration..... | 6 75 |



Nos. 1031 to 1037.

HATS AND HELMETS.



Nos. 1029, 1030.

- No. 1029 Helmet of elegant pattern. Cork body covered with finest broadcloth, very rich plume of ostrich feathers made in two colors, goldplated front ornament, chin chain and plume socket. See illustration. Each. \$8 50
- No. 1030 Helmet same as No. 1029, but with the metal trimming nickelplated. 8 50



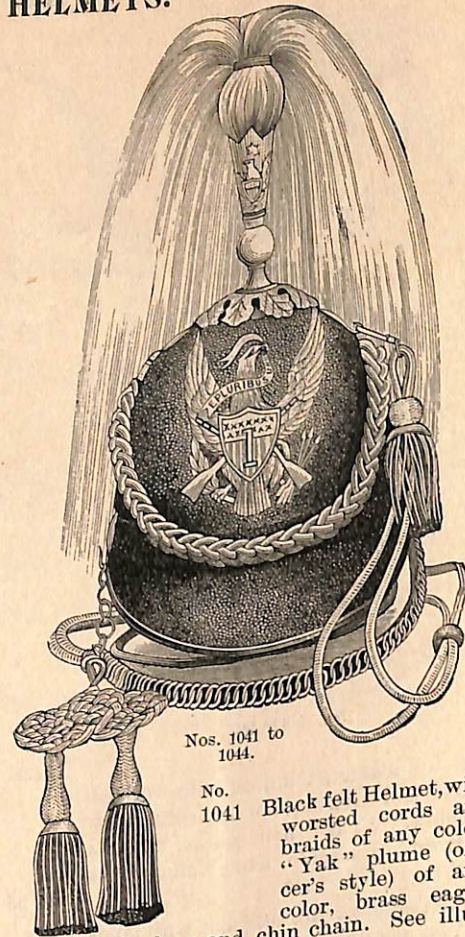
Front View.



Side View.

Nos. 1048 to 1051.

- No. 1048 Black felt Helmet, with brass front ornament, spike and base and side buttons. Each. \$2 85
- No. 1049 Helmet same as No. 1048, but with goldplated metal trimmings. 3 25
- No. 1050 Helmet with cork body, brass eagle front ornament, spike, base and side buttons, 3 50
- No. 1051 Helmet same as No. 1050, but with goldplated metal trimmings. 4 00



Nos. 1041 to 1044.

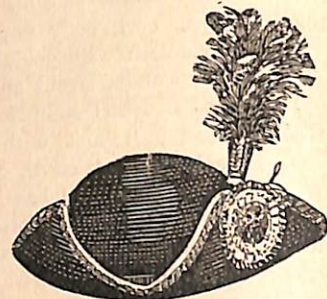
- No. 1041 Black felt Helmet, with worsted cords and braids of any color, "Yak" plume (officer's style) of any color, brass eagle, spike base and chin chain. See illustration. Each. \$7 25
- No. 1042 Helmet same as No. 1041, but with goldplated metal trimmings. 7 85
- No. 1043 Helmet same as No. 1041, but of cork covered with fine broadcloth. 8 50
- No. 1044 Helmet with cork body covered with fine broadcloth, with gold cords and braids, goldplated plume socket, spike, base, front ornament and chin chain, extra fine plume of "Yak" hair. See illustration. 14 00

- No. 1052 Square folded Hat of black felt, bound with silk, with silk tassel, Each. \$3 50



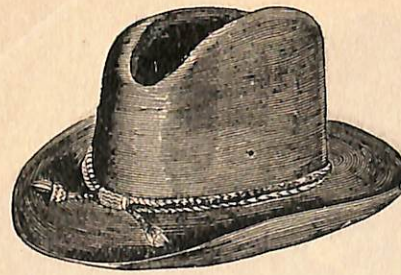
No. 1052.

- No. 1053 Continental Felt Hat, bound with gold lace, with red, white and blue satin rosette on side and upright feather plume. Each. \$4 50
- No. 1054 Continental Hat, made of silk plush, trimmed same as above, \$6 50



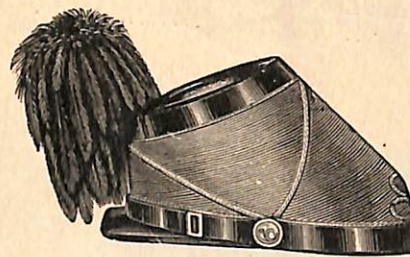
No. 1053.

HATS AND SHAKOS.



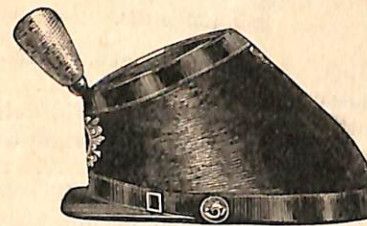
Nos. 1058, 1059.

- No. 1058 Black Felt Burnside Hat, with gilt and black cord. Each. \$2 50
- No. 1059 Same as No. 1058, but better grade. 3 50



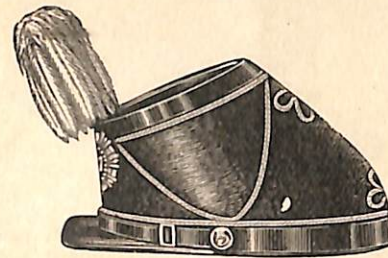
No. 1200.

- No. 1200 Shako, with leather top and band, cloth covered body, gilt braiding, goldplated ornament and fine feather plume. Each. \$7 50



No. 1201.

- No. 1201 Shako, plush felt body, gilt front ornament, Pompon on top, side buttons and chin strap; Shako has pressed enameled leather top and band. Each. \$6 00



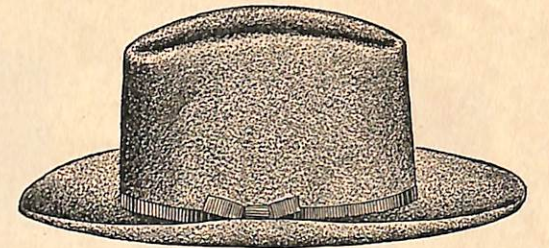
No. 1202.

- No. 1202 Shako, pressed leather top and band, gold braided, front ornament and small fountain plume. Each. \$6 75



Nos. 1056, 1057.

- No. 1056 Felt Army Hat, old regulation, gilt and black hat cord, two black feather plumes, gilt metal bugle and eagle. See illustration. Each. \$5 00
- No. 1057 Felt Army Hat, same as No. 1056, but with bullion embroidered ornaments instead of metal. 7 00



No. 1055.

- No. 1055 U. S. Regulation Drab Campaign Hat. Each. \$2 50



No. 1203.

- No. 1203 Plush Shako, with pressed enameled leather top and band, goldplated ornament in front, fine drooping plume. Each. \$7 75



No. 1204.

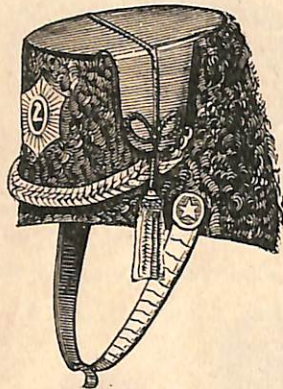
- No. 1204 Plush Shako, with pressed enameled leather top and band, gold lace and braid ornamentation, with upright plume of any color, goldplated front ornament. Each. \$8 00

SHAKOS, HATS, AND CAPS.



No. 1207.

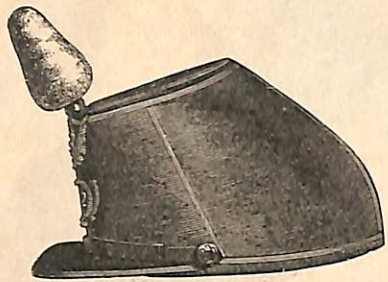
No. 1207 Cloth covered Shako, handsomely trimmed with gold laces, fine colored plume on top, with front ornament..... \$7 50



Nos. 1212, 1213.

No. 1212 Imitation Astrachan Shako, either gray or black, with cloth bag of any color, gold braided front cord, front ornament and chin scales. See illustration..... \$7 50

No. 1213 Genuine Astrachan Shako, either in black or gray, same trimmings as No. 1212... 12 00



No. 1205.

No. 1205 Shako, cloth covered body, gilt braid trimming, pompon top, brass ornament, \$3 50



No. 1206.

No. 1206 Plush Shako, with pressed enameled leather top and band, gold lace braiding, goldplated ornament in front; with extra fine coque plume of any desired color..... \$8 50



Nos. 1208 to 1211.

No. 1208 Imitation Astrachan Shako, without plume or chain..... \$5 00

No. 1209 Imitation Astrachan Shako, with chin chain, front ornament and upright hair aigrette. See illustration..... 7 50

No. 1210 Imitation Astrachan Shako, with chin chain, front ornament, genuine Heron plume. See illustration..... 10 00

No. 1211 Genuine Astrachan Shako, either gray or black, with chin chain, ornament and genuine Heron plume. See illustration. 13 50



No. 1344.

No. 1344 Fatigue cap, of extra fine quality, gold lace in double rows around band, gold wire chin cord in front, gold bullion, embroidered name on front. This cap is of extra grade; can be made in any color or colors..... \$4 00

CAPS.



Nos. 1300 to 1303.

No. 1300 Blue Cloth Cap, navy style, band of one inch gold lace between welts, gilt metal wreath and silverplated figures or letters, leather chin strap..... \$1 25

1301 Cap, same style and trimmings as No. 1300, but of better quality, finer finish, \$1 25

1302 Cap, as No. 1300, but with gold bullion, embroidered wreath and lyre... 1 75

1303 Cap, same as No. 1301, but with gold bullion wreath and lyre..... 2 10

1304 Blue Flannel Cap, well made, with one inch gold lace band, gold cord over top, gilt metal wreath on front..... 2 50



Nos. 1304 to 1307 1/2.

Each.

No. 1305 Blue Cloth Cap, same as No. 1304, same trimming, etc..... \$1 80

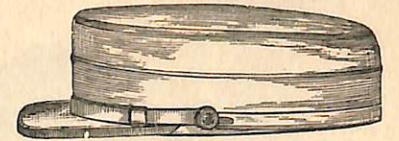
1306 Cloth Cap, of any color, extra well made, same trimmings as No. 1304.... 2 00

1307 Cap, same as No. 1305, but with gold bullion embroidered wreath and lyre... 2 50

1307 1/2 Cap of good broadcloth, with band of gold wire lace one inch wide, and bullion embroidered wreath and lyre, gold wire cord over top; a fine article. 2 75

No. 1308 White Duck Cap, one cover only..... Per Dozen. \$10 00

1309 White Duck Cap, with two movable covers, 15 00



Nos. 1308, 1309.



No. 1310.

No. 1310 Cap, of extra fine quality, embroidered initials of band in front or special monogram, gold wire cord over top, gold wire lace in double rows on band..... \$3 75

1311 Blue Cloth Cap, with black silk band and gilt soutache braid in ornamental design, gold cord in front..... 1 50

1312 Cap, same as No. 1311, but of finer cloth and finish..... 1 75

1313 Cap, same grade as No. 1312, but with gold wire cap cord in front..... 2 00



Nos. 1311 to 1313.

Each.

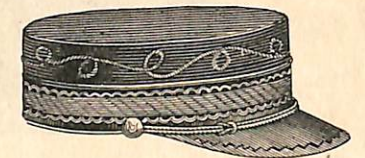
No. 1314 Blue Flannel Cap, with drooping visors, gold lace band, gold soutache, fancy braiding, gold cord in front..... \$1 50

1315 Cap, same style as No. 1314, but of finer cloth and finish..... 1 75

1316 Cap, same as No. 1315, but with gold wire cap cord in front..... 2 00

No. 1317 Cap, of blue cloth, gold braid on band, gold cord over top, embroidered wreath in front..... Per Dozen. \$27 00

1318 Cap, same as above, but of better quality of material... 33 00



Nos. 1314 to 1316.



Nos. 1317 to 1320.

No. 1319 Cap, of fine quality, with gold wire lace band in front, wire cord over top, fine bullion embroidered wreath in front... \$36 00

1320 Cap, same as No. 1317, but with gilt metal ornament in centre... 21 00

1321 Navy Style of Cap, with a drooping visor, ventilated sides, silk band, metal ornament, gold lace strap in front..... 21 00

1322 Cap, same as No. 1321, but with gold bullion embroidered ornaments..... 30 00

No. 1323 Stiff Fatigue Cap, of blue flannel, with one row gilt braid, gilt metal wreath and lyre on front, with round pompon, \$1 75



Nos. 1323 to 1327.

Per Dozen.

No. 1324 Cap, same as No. 1323, but of finer material..... \$2 10

1325 Cap, same as No. 1323, but substituting gilt front cord for the leather strap..... 2 25

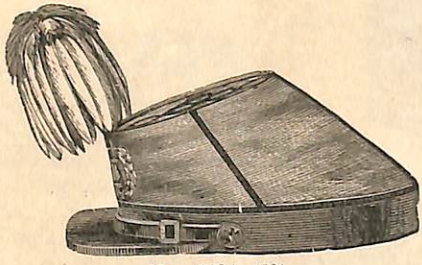
1326 Cap, of any color of cloth, well made, with one row gilt braid, with pompon on top, and gilt wreath and lyre on front..... 2 50

1327 Cap, same as No. 1326, but substituting gilt front cord for leather strap, and gold bullion embroidered wreath and lyre..... 3 15



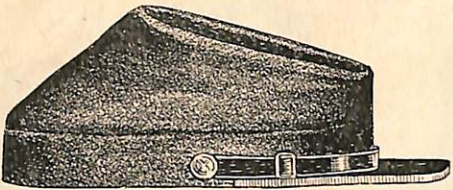
Nos. 1321 to 1322.

CAPS, ETC.



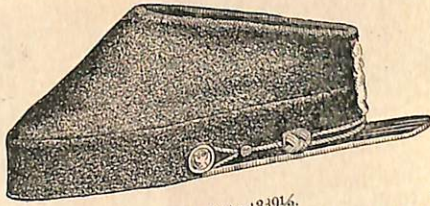
Nos. 1328 to 1331.

No.			Each.
1328	Blue Flannel Cap, with feather plume, trimmed with one row of gold braid, gilt metal wreath and lyre on front ...	\$2 70	
1329	Blue Fatigue Cap, of better grade than No. 1328, with same plume, etc.....	3 15	
1330	Cap, same as No. 1329, but with gold cord in front in place of leather strap.....	3 50	
1331	Cap, of fine quality, with one row gold braid, feather plume on top, gold bullion embroidered wreath and lyre on front, and gold wire cap cord.....	4 30	



Nos. 1332 to 1335.

No.			Per Doz.
1332	Fatigue Cap, of any color flannel, with front strap and side buttons.....	10 50	
1333 1/2	Fatigue Cap, of any color of cloth, better made than No. 1332.....	13 50	
1334 1/2	Fatigue Cap, of fine cloth of any color, well made.....	16 00	
1335 1/2	Fatigue Cap, of any color of cloth, leather inside band, good durable cap..	20 00	
1335 3/4	Fatigue Cap, of extra fine quality, heavy leather visor, leather inside band, fine lining.....	24 00	
	Metal Wreath and three letters added to above caps.....	\$0 15	Each.
	Embroidered Wreath and letters added to above caps.....	75	



Nos. 1336 1/2 to 1339 1/4.

No.			Per doz.
1336a	Fatigue Cap, of blue flannel with cheap gilt front cord, metal wreath and letters in front.....	\$14 00	
1337a	Fatigue Cap, of any color cloth of fair quality, with gilt bullion slide cord in front and gilt metal wreath and letters.....	22 00	
1338a	Fatigue Cap, of good quality, with gilt bullion slide cord in front and gilt bullion embroidered wreath and letters, suitable for schools, military societies, G. A. R., etc.....	33 00	
1339a	Fatigue Cap, of fine quality cloth, with gilt bullion cord in front and gilt bullion embroidered wreath and letters. This is suitable for military schools, G. A. R. and others desiring a fine cap.....	39 00	



Nos. 1340 to 1343.

No.			Per Doz.
1340	Blue Fatigue Cap, with one row gilt braid.....	13 00	
1341	Fatigue Cap, with one row gilt braid, better grade than No. 1340.....	16 50	
1342	Fatigue Cap, with one row gilt braid, made of extra good quality material..	21 00	
1343	Extra fine quality Fatigue Cap, with one row gilt braid.....	24 00	
	For extra rows Gilt Braid on above caps, add \$2.50 per dozen for each row.		

CAP CORDS.



Cap Cord. Nos. 1506 to 1509.

No.			Per doz.	No.			Per Doz.
1506	Cap cords, of any color mohair cord. See illustration.....	\$2 50		1508	Cap Cords, of all gilt wire cord. See illustration.....		\$3 50
1507	Cap cords, of all gilt cord. See illustration.....	2 75		1509	Cap Cord, same as No. 1508, but of heavier cord.....		4 00

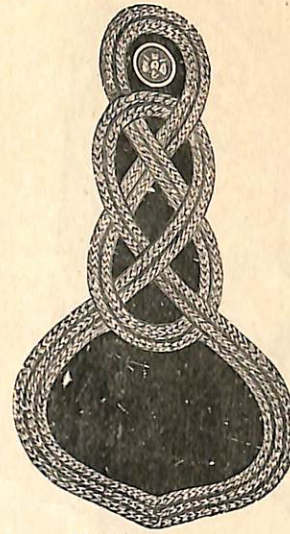
HAT CORDS.

No.			Per Dozen.	No.			Each.
1512	Gilt and Black Hat Cords, with acorn ends. Each, 25c.....	\$2 75		1514	Gilt and Black Hat Cords, with acorn ends, extra fine quality.....		1 00
1513	All Gilt Hat Cords, with acorn ends.....	\$0 50		1515	All Gilt Hat Cords, with acorn ends, extra fine quality.....		2 00

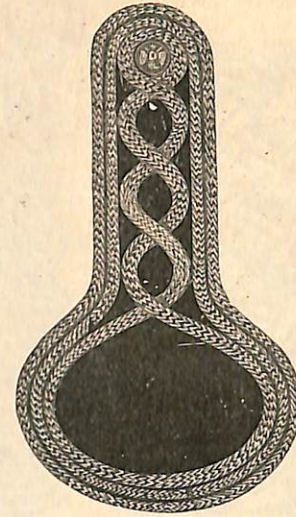
SHOULDER KNOTS.



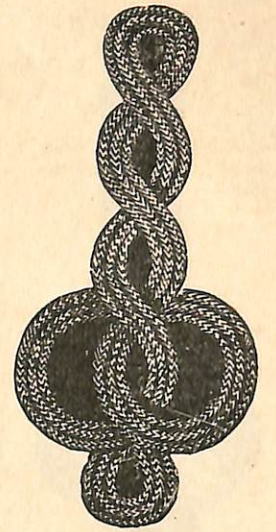
Nos. 1350 to 1352.



Nos. 1353 to 1356.

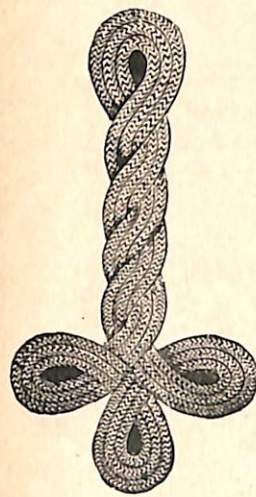


Nos. 1360 to 1363.



Nos. 1364 to 1367.

No.			Per Pair.	No.			Per Pair.
1350	Shoulder Knot, of mohair cord of any color, upon cloth of any color.....	\$1 25		1362	Shoulder Knots, of same design as No. 1360, but made entirely of gold cord...	\$2 25	
1351	Shoulder Knot, as No. 1350, but of mohair and gold cord.....	1 50		1363	Shoulder Knots, same as No. 1360, but of all gold wire cord.....	3 00	
1351	Shoulder Knot, as No. 1350, but of all gold cord.....	1 75		1364	Shoulder Knot, loop pattern, made of worsted cord of any color The cloth on shank and pad can be of any shade desired.....	1 10	
1352	Shoulder Knot, as No. 1350, but of all gold wire cord.....	2 25		1365	Shoulder Knot, same as No. 1364. but with one strand of gold cord and two strands of mohair.....	1 25	
1353	Shoulder Knot, of regulation pattern, made of any color of mohair cord, on cloth of any desired color.....	1 50		1366	Shoulder Knot, as No. 1364, but of all gold cord.....	1 50	
1354	Same as No. 1353, but made of mohair and gilt cord.....	1 75		1367	Shoulder Knot, of same design as No. 1364, but of all gold wire cord.....	2 00	
1355	Same as No. 1353, but made of all gold cord.....	2 00		1372	Clover Leaf Pattern, with triple cord shank, made of any color mohair cord..	1 20	
1356	Same as No. 1353, but made of all gold wire cord.....	2 50		1373	Same as 1372, but one strand of all gold cord and two strands of any color of mohair cord.....	1 40	
1360	Shoulder Knots, of neat design, fancy open design on shank, three strands around pad; made on cloth of any color, and of worsted cord in one or three colors....	1 75		1374	Same as No. 1372, but of all gold cord....	1 75	
1361	Shoulder Knots, of same design as No. 1360, but made of mohair and gold cord,.....	2 00		1375	Same as No. 1372, but of all gold wire cord.....	2 15	



Nos. 1372 to 1375.



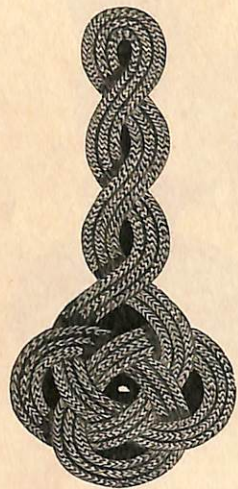
Nos. 1376 to 1379.



Nos. 1380 to 1383.

No.				No.			
1376	Original design of shoulder knot, made of one strand of mohair cord on cloth backing of any desired shade.....	1 30		1381	Same as No. 1380, but one strand of gold and two of mohair cord.....	1 60	
1377	Shoulder Knot, same as 1376, but of all gold cord.....	1 75		1382	Same as No. 1380, but of all gold cord.....	2 00	
1378	Same as No. 1377, but of finer quality.....	2 00		1383	Same as No. 1380, but of all gold wire cord.....	2 50	
1379	Same as No. 1376, but of all gold wire cord.....	2 50					
1380	Shoulder Knot, of mohair cord, two strands braided and twisted, made in any color....	1 35					

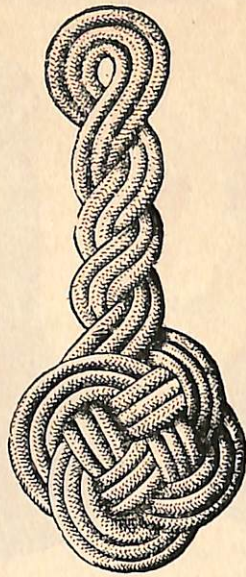
SHOULDER KNOTS.



Nos. 1384 to 1387.



Nos. 1388 to 1391.



Nos. 1392 to 1395.



Nos. 1400 to 1443.



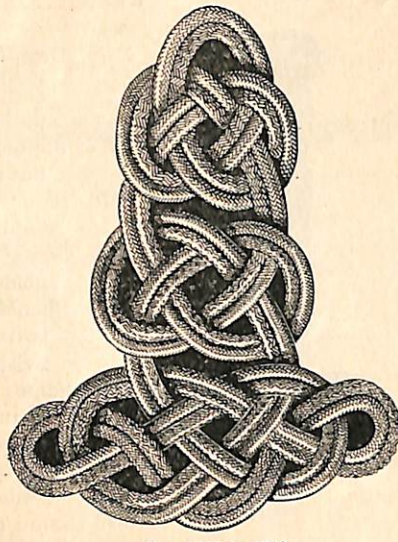
Nos. 1448 to 1451.

- | | | |
|----------|--|--------|
| No. 1384 | Shoulder Knot, of favorite design, made of three strands of worsted cords, with raised pad..... | \$1 25 |
| 1385 | Same as No. 1384, but of one strand gold cord, and two strands of mohair cord.. | 1 50 |
| 1386 | Same as No. 1384, but of all gold cord... | 1 75 |
| 1387 | Same as No. 1384, but of all gold wire cord | 2 50 |
| 1388 | Shoulder Knot, long shank pattern, made of worsted cord, as per illustration..... | 1 00 |
| 1389 | Same as No. 1388, but with one strand of gold cord and two strands of any color of mohair..... | 1 25 |
| 1390 | Same as No. 1388, but of all gold cord.... | 1 75 |
| 1391 | Same as No. 1388, but of all gold wire cord | 2 50 |
| 1392 | Shoulder Knot, of closely braided heavy cord, made flat, and intended to be sewed direct to garment. Made of any color of mohair cord..... | 1 25 |
| 1393 | Same as No. 1392, but of one strand of gold and two strands of mohair cord... | 1 50 |
| 1394 | Same as No. 1392, but of all gold cord.... | 1 75 |

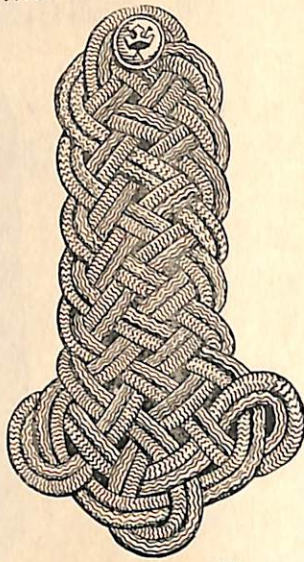
- | | | |
|----------|--|--------|
| No. 1395 | Same as No. 1392, but of heavy gold wire cord | \$2 50 |
| 1396 | Shoulder Knot, of new and handsome design, made of worsted cord of any color. This knot is intended to be sewed to a coat. (See illustration) | 1 50 |
| 1397 | Same as No. 1396, but with one strand of mohair and one strand of all gold cord. | 1 75 |
| 1398 | Same as No. 1396, but of all gold cord. | 2 00 |
| 1399 | Same as No. 1396, but of gold wire cord. | 2 50 |
| 1400 | Shoulder Knot, of very neat, light design. Made of worsted cord of any color. (See illustration)..... | 1 00 |
| 1448 | Shoulder Knot, of popular style. Small and neat, made of any color of corded braid in Mohair, with small raised pad, in centre of which is an initial or monogram. (See illustration)..... | 1 50 |
| 1449 | Same as No. 1448, but made of all gold flat cord | 2 00 |
| 1450 | Same as No. 1448, but of extra fine gold flat cord..... | 2 50 |
| 1451 | Same as No. 1448, but of all gold wire flat cord | 3 50 |



Nos. 1444 to 1447.



Nos. 1396 to 1399.



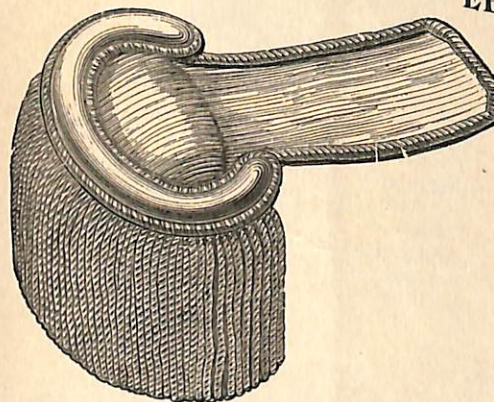
Nos. 1452 to 1455.

Prices of Shoulder Knots continued on page 25.

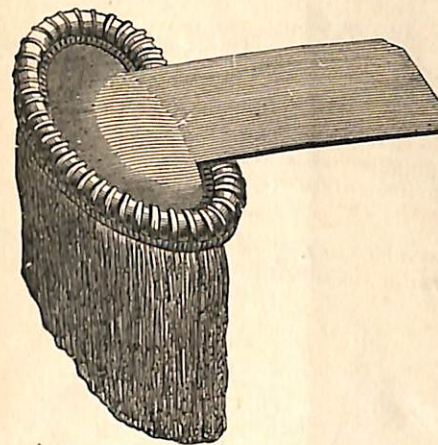
Shoulder Knots—Continued.

- | | | | | | |
|----------|--|-----------|----------|--|-----------|
| No. 1401 | Same as No. 1400, but of worsted and gold cord | Per Pair. | No. 1447 | Same as No. 1444, but of all gold wire cord | Per Pair. |
| 1402 | Same as No. 1400, but of all gold cord..... | \$1 35 | 1452 | Shoulder Knot, of any color of worsted cord. See illustration..... | 1 50 |
| 1403 | Shoulder Knot, of very handsome design. Made of worsted cord of any color..... | 1 75 | 1453 | Same as No. 1452, but of all gold and mohair cord | 1 75 |
| 1444 | Shoulder Knot, of very handsome design. Made of worsted cord of any color..... | 2 25 | 1454 | Same as No. 1452, but of all gold cord.... | 2 50 |
| 1445 | Same as No. 1444, but of worsted and gold cord | 1 25 | 1455 | Same as No. 1452 entirely, but of all gold wire cord | 3 50 |
| 1446 | Same as No. 1444, but of all gold cord.... | 1 75 | | | |
| | | 2 25 | | | |

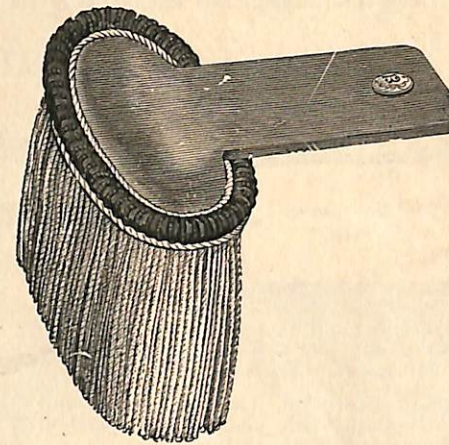
EPAULETTES.



Nos. 1356, 1357.

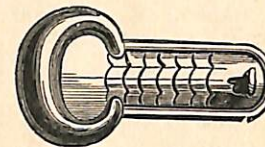


No. 1358.

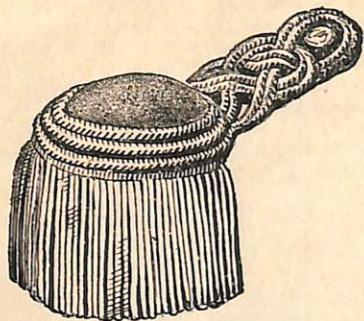


Nos. 1359 to 1370.

- | | | | |
|-------------------------------|---|-----------|--------|
| No. 1362. | Epaulettes, same as No. 1361, but with patent fastenings instead of hook..... | Per Pair. | \$3 50 |
| 1363 | Epaulettes, same as No. 1361, but with brass rim binding around shank..... | 3 50 | |
| 1364 | Epaulette, of good size, long fringe of cotton or worsted, with gold fringe intermixed and fine fancy crescent cord, cloth covered top, hook fastenings. . . | 5 00 | |
| 1365 | Epaulette, same as No. 1364, but with nickelplated rims or bindings around crescent..... | 5 75 | |
| No. 1366 | Epaulette, same as No. 1364, but with patent fastenings..... | Per Pair. | \$6 00 |
| 1367 | Epaulette, same as worn by 7th Reg't, N. G. S. N. Y., with long cotton or worsted fringe, very handsome crescent cord, with cloth top; this Epaulette is of large size, well made and handsome. | 3 75 | |
| 1368 | Epaulette, same as above, but with the addition of gold fringe intermixed with the cotton or worsted..... | 5 50 | |
| 1369 | Epaulette, same as No. 1368, but with rims or bindings of metal..... | 6 00 | |
| 1370 | Epaulettes, same as No. 1369, but with patent fastenings | 6 50 | |
| METAL SHOULDER SCALES. | | | |
| No. 1377 | Brass Polished Shoulder Scales. See illustration..... | Per Pair. | \$2 50 |
| 1378 | Nickelplated Shoulder Scales. See illustration..... | 3 00 | |
| 1379 | Goldplated Shoulder Scales. See illustration..... | 4 00 | |



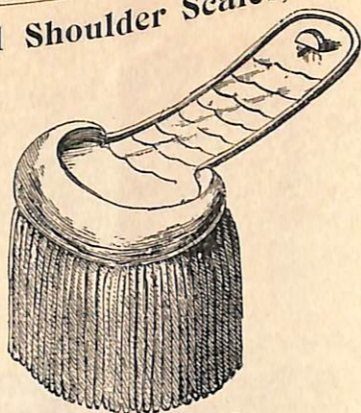
Shoulder Knot and Epaulette Combined.



Nos. 1371 to 1373.

No.	Description	Per Pair.
1371	Fringed shoulder knot, made of any color of worsted cord, with long white cotton fringe around pad. See illustration.	\$3 00
1372	Fringed shoulder knot, same as No. 1371, but with long worsted fringe of any desired color. See illustration.	3 50
1373	Fringed shoulder knot, made of worsted and gilt cord, with worsted and gilt fringe intermixed. See illustration.	4 50

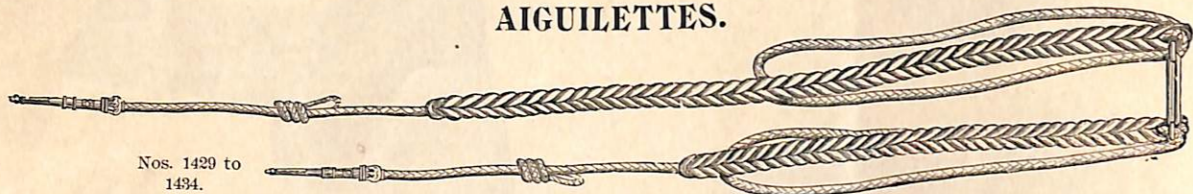
Metal Shoulder Scales, Fringed.



Nos. 1374 to 1376.

No.	Description	Per Pair.
1374	Brass shoulder scales, with white cotton fringe. See illustration.	\$3 50
1375	Nickelplated shoulder scales, with colored worsted fringe of any color. See illustration.	4 00
1376	Goldplated shoulder scales, with colored worsted and gold fringe intermixed. See illustration.	6 00

AIGUILLETES.

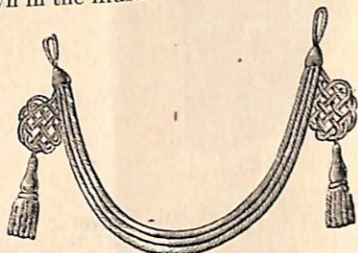


Nos. 1429 to 1434.

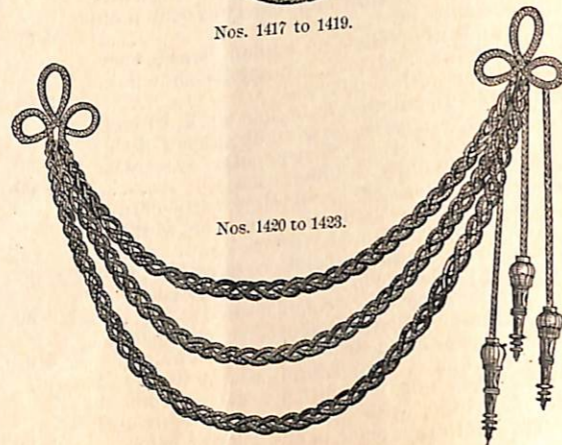
No.	Description	Each.
1417	Breast Aiguillette, made of three strands of mohair cord, with plaques and pendent tassels. See illustration.	\$1 75
1418	Breast Aiguillette, made of three strands gilt cord, with plaques and pendent tassels. See illustration.	2 50
1419	Breast Aiguillette, same as No. 1418, but of fine gold wire cord.	4 75
1420	Breast Aiguillette, of new design, three braided breast cord, with pendent, tips, made of any color of mohair cord. See illustration.	2 50
1421	Same as No. 1420, but made of mohair and gilt cord combined.	3 00
1422	Same as No. 1421, but made of all gilt cord.	3 50
1423	Same as No. 1421, but made of fine gilt wire cord.	5 00
1429	Aiguillette, made of mohair cord of any color, with metal tips and sides. See illustration.	2 75
1430	Aiguillette, same as No. 1429, but of mohair and gilt cord.	3 00
1431	Aiguillette, same as No. 1430, but of all gilt cord.	3 25
1432	Aiguillette, same as No. 1431, but of fine gilt wire cord.	6 50
1435	Aiguillette, of latest U. S. A. Regulation, made of any color or colors of mohair cord, with metal tips and sides. See illustration.	3 50
1436	Aiguillette, same as No. 1435, but made of all gilt cord.	4 50

No.	Description	Each.
1437	Aiguillette same as No. 1435, but made of fine gilt cord.	\$7 00

Prices on above Aigillettes do not include the shoulder knot shown in the illustration.



Nos. 1417 to 1419.



Nos. 1420 to 1423.



Corporal



Sergeant



First Sergeant

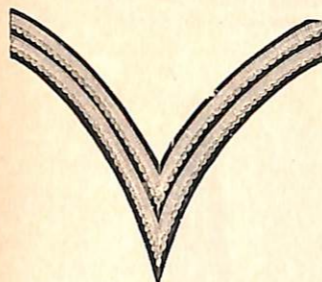
FLAT CLOTH CHEVRONS.

Made of stripes of cloth, 1/2 inch, sewed on cloth of any color—any color or colors.

No.	Description	Raw Edges.	Edges Turned in.
1560	Corporal		\$0 50
1561	Sergeant		0 75
1562	First Sergeant		1 00
1563	Hospital Steward		1 25
1564	Ordnance Sergeant		1 25
1565	Principal Musician		1 50
1566	Regt. Qm. Sergeant		1 50
1567	Sergeant Major		1 75
1568	Regt. and Batt. Color Sergeant		1 75
1569	Commissary Sergeant		2 00
1570	Co. Qm. Sergeant		1 25
1571	Chief Trumpeter		1 25
1572	Drum Major		1 45
			3 25

FLAT GOLD CHEVRONS.

No.	Description	Per Pair.		
		Gilt.	Fine Gilt.	Real Gold.
1527	Corporal	\$0 60	\$0 95	\$2 50
1528	Sergeant	0 80	1 25	3 25
1529	First Sergeant	1 00	1 60	3 75
1530	Hospital Steward	1 75	2 50	4 25
1531	Ordnance Sergeant	2 50	2 75	5 25
1532	Principal Musician	2 50	2 75	5 25
1533	Regt. Qm. Sergeant	1 50	2 25	4 50
1534	Sergeant Major	1 75	2 50	4 75
1535	Pioneer	2 00	2 75	5 00
1536	Farrier	2 00	2 75	5 00
1537	Regt. and Batt. Color Sergeant	2 30	2 75	5 00
1538	Commissary Sergeant	1 80	2 15	4 50
1539	Past Qm. Sergeant	1 65	2 50	4 50
1540	Chief Trumpeter	2 50	3 00	6 00
1541	Saddler Sergeant	1 50	2 00	4 25
1542	Drum Major	3 00	4 00	7 50



Corporal



Sergeant



First Sergeant

RAISED CLOTH CHEVRONS.

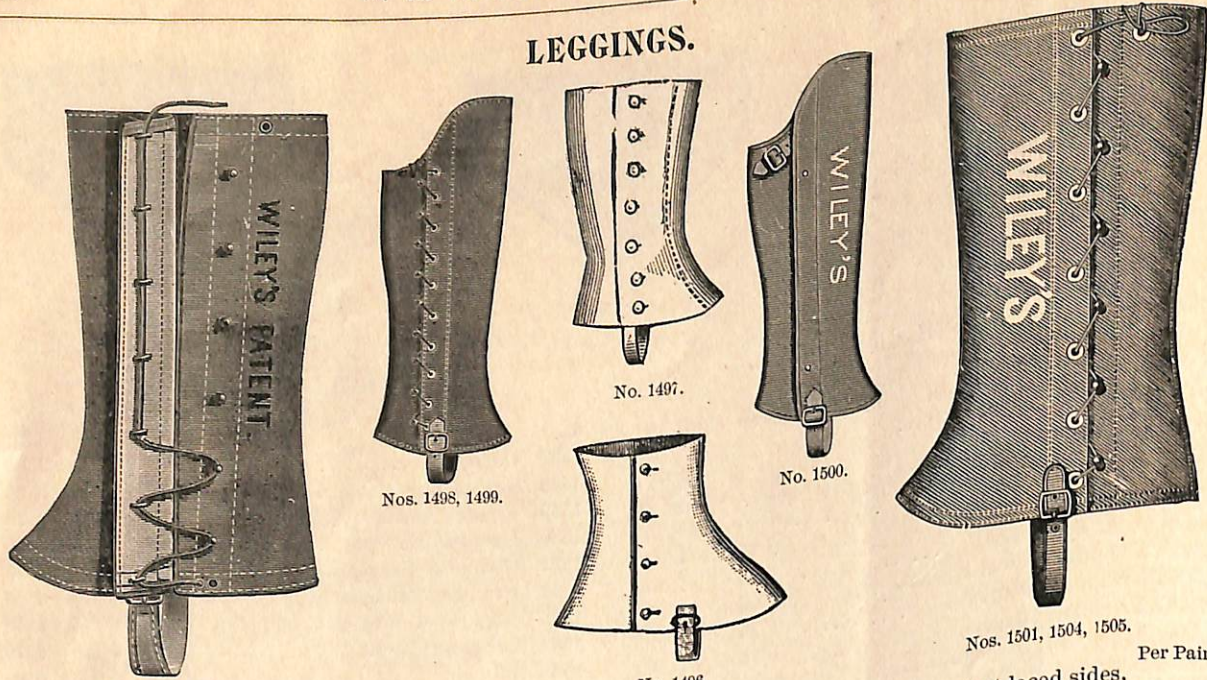
Made of white or other cloth, raised and filled in.

No.	Description	Per Pair.
1573	Corporal	\$2 00
1574	Sergeant	2 50
1575	First Sergeant	3 00
1576	Hospital Steward	3 00
1577	Ordnance Sergeant	3 25
1578	Principal Musician	3 25
1579	Regt. Qm. Sergeant	3 50
1580	Sergeant Major	3 75
1581	Regt. and Batt. Color Sergeant	3 75
1582	Commissary Sergeant	3 00
1583	Co. Qm. Sergeant	3 00
1584	Chief Trumpeter	3 25
1585	Drum Major	4 50

LACE CHEVRONS.

No.	Description	Per Pair.	
		Gilt Lace.	Fine Gold Lace.
1543	Corporal	\$1 75	\$3 25
1544	Sergeant	2 50	4 50
1545	First Sergeant	3 50	5 75
1546	Hospital Steward	3 75	6 50
1547	Ordnance Sergeant	4 00	7 00
1548	Principal Musician	4 50	7 50
1549	Qm. Sergeant	4 50	7 50
1550	Sergeant Major	5 00	8 25
1551	Farrier	4 50	8 00
1552	Regt. and Batt. Color Sergeant	4 00	7 50
1553	Commissary Sergeant	3 75	6 50
1554	Past Qm. Sergeant	3 75	7 00
1555	Chief Trumpeter	5 00	8 50
1556	Saddler Sergeant	3 75	7 00
1557	Drum Major	6 50	9 50

LEGGINGS.



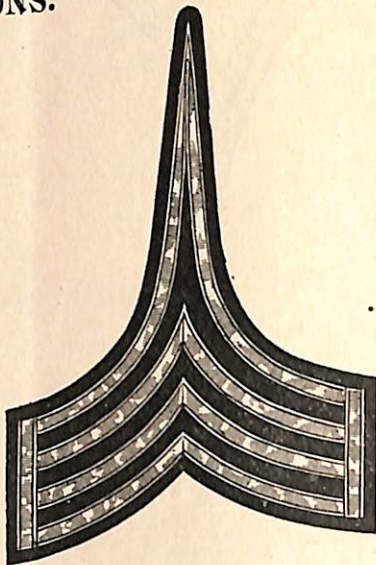
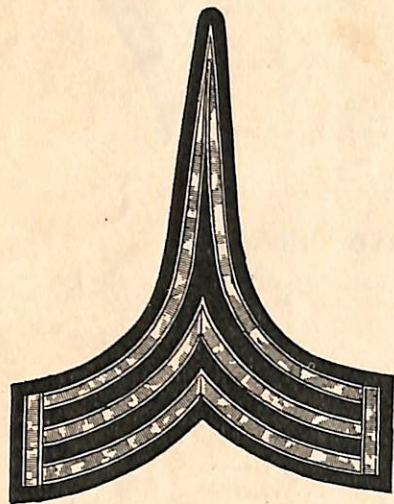
No.	Description	Per Pair.
1496	White duck Overgaiters, lined, buttoned at side. See illustration.	\$0 60
1497	White duck Leggings, 12 inches high at sides, buttoned, lined. See illustration.	70
1498	White duck Leggings, 12 inches high, patent lacing at sides, lined. See illustration.	80
1499	Tan, 15 oz. duck, with patent laced fastenings, water and mildew proof, 12 inches high. See illustration.	1 10
1500	Tan, 15 oz. duck, same as No. 1499, but with patent spring lace fastenings. See illustration.	1 30

No.	Description	Per Pair.
1501	Tan, 15 oz. duck, with patent laced sides, waterproof and mildew proof, 17 inches high.	\$1 30
1502	Tan, 15 oz. duck, same as No. 1501, but with patent spring laced sides.	1 50
1503	Grain leather U. S. Army Leggings, patent laced sides. See illustration.	2 50
1504	Leggings, same as No. 1503, but spring laced sides.	3 00
1505	Grain leather U. S. Army Leggings, long, with spring laced sides.	5 00

WEST POINT CADET CHEVRONS.

REGULATIONS.

Made of gold lace one-third inch wide, as follows:
 For Captain, four bars.
 For Adjutant, three bars and an arc of three bars.
 For Quartermaster, three bars and a tie of three bars.
 For Lieutenant, three bars.
 For Sergeant-Major, two bars and an arc of two bars.
 For Quartermaster-Sergeant, two bars and a tie of two bars.
 For First Sergeant, two bars and a lozenge.
 For Sergeant, two bars.
 For Color-Sergeant, two bars and a star.
 For Corporal, two bars.
 For Color-Corporal, two bars and a star.



Lieutenant.		PRICES.		Captain.			
No.	Description	Fine Gilt.	Real Gold.	No.	Description	Fine Gilt.	Real Gold.
1516	For Captain	\$1 20	\$3 50	1522	For First Sergeant	\$1 00	\$2 30
1517	For Adjutant	1 85	5 25	1523	For Sergeant	90	2 00
1518	For Quartermaster	1 75	4 75	1524	Color Sergeant	2 25	3 15
1519	For Lieutenant	1 10	2 50	1525	Corporal	90	2 00
1520	For Sergeant Major	1 50	3 40	1526	Color-Corporal	2 25	3 15
1521	For Quartermaster-Sergeant	1 80	4 65				

UNITED STATES REGULATION CLOTH FLAT CHEVRONS.

Rank	Per Pair.
Corporal	\$0 40
Sergeant	45
Orderly Sergeant	55
Company Quartermaster Sergeant	55
Regiment Quartermaster Sergeant	75
Sergeant Major	1 10
Color Sergeant	1 10
Ordnance Sergeant	90
Chief Trumpeter	90
Drum Major	90
Hospital Steward	1 10
Commissary Sergeant	85

WEBBING WAIST BELTS.

No.	Description	Each.
1473½	Plain Webbing Waist Belt, no plate.	\$0 15
1474	White Webbing Waist Belt, with plain brass belt plate.	28
1474a	White Webbing Waist Belt, with brass West Point belt plate. See page 34 for illustration of plate.	45
1474b	White Webbing Waist Belt, with brass U. S. regulation plate for privates. See page 34 for illustration of plate.	50
1474c	White Webbing Waist Belt, with brass belt plate having company letter on front. See No. 241 on page 34 for style of plate.	55

PATENT LEATHER WAIST BELTS.

No.	Description	Each.
1475	Patent Leather Waist Belt, with plain brass plate.	\$0 60
1475a	Patent Leather Waist Belt, with brass plate having company letter on front. See No. 241 on page 34 for style of plate.	80
1475b	Patent Leather Waist Belt, with brass eagle belt plate. See No. 257 on page 34 for plate.	90
1475c	Patent Leather Waist Belt, with officer's gilt U. S. plate. See No. 62 on page 34.	1 00

WHITE CADET WEBBING.

No.	Description	Per piece of 12 Yards.
1601½	White Cadet Webbing, one and one-fourth inches wide.	\$0 90
1602	White Cadet Webbing, one and three-quarter inches.	1 00
1603	White Cadet Webbing, two inches.	1 10
1604	White Cadet Webbing, two and one-quarter inches.	1 20

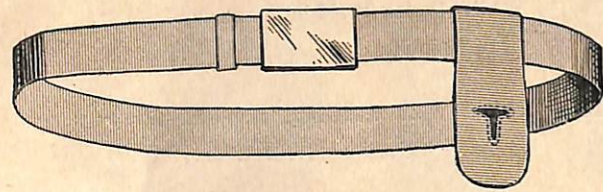
ENAMELED LEATHER WAIST BELT.

No.	Description	Each.
1476¼	Enameled Leather Waist Belt, plain brass plate.	\$1 15
1476a	Enameled Leather Waist Belt, with U. S. Regulation plates for privates. See No. 249½ on page 34.	1 35
1476b	Enameled Leather Waist Belt, with brass plate having company letter on front. See No. 241 on page 34.	1 50
1476c	Enameled Leather Waist Belt, with gilt and burnished U. S. officer's belt plate. See No. 62 on page 34.	\$1 75

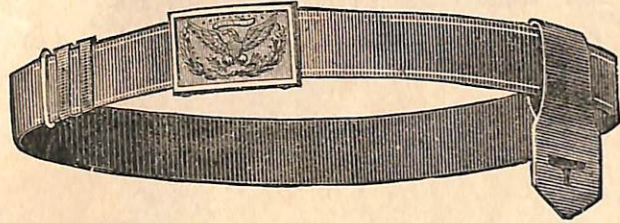
BUFF LEATHER WAIST BELTS.

No.	Description	Each.
1477a	Buff Leather Waist Belt, with plain brass plate.	\$1 25
1477b	Buff Leather Waist Belt, with U. S. Regulation plates for privates. See No. 249½ on page 34.	1 50
1477c	Buff Leather Waist Belt, with brass plate with company letter on front. See No. 241 on page 34.	1 65

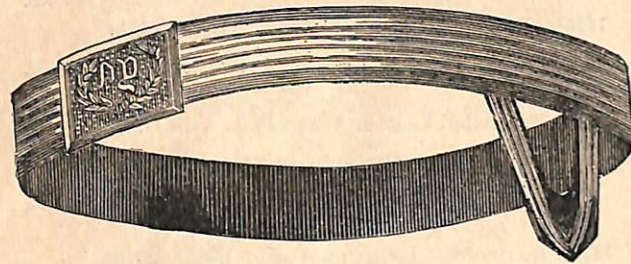
BELTS.



Nos. 1478, 1479.



Nos. 1480, 1481.



No. 1482.

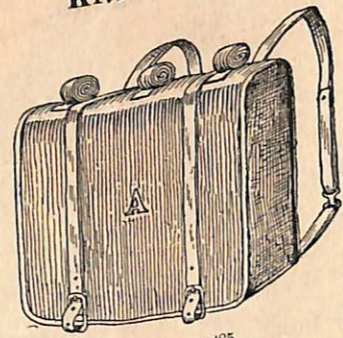
- | | | |
|----------|--|--------------|
| No. 1478 | Patent Leather Waist Belt and Throg, with plain brass belt plate. See illustration..... | Each. \$0 90 |
| 1479 | Enameled Leather Waist Belt and Throg, plain brass belt plate. See illustration, | 1 60 |
| 1480 | Patent Leather Waist Belt and Throg, with brass U. S. belt plate..... | 1 25 |
| 1481 | Enameled Leather Waist Belt and Throg, with gilt U. S. belt plate..... | 2 25 |
| 1482 | Non-Commissioned Officer's Full Dress Belt, made of enameled leather, faced with gilt wire and silk lace, with N. G., N. Y. or U. S. belt plate..... | 5 00 |

For Belts with Slings see page 11.

BUGLE CORDS.

- | | | |
|-----------|---|--------------|
| No. 1482½ | Bugle Cords of any color, regulation pattern..... | Each. \$1 00 |
|-----------|---|--------------|

KNAPSACKS.



Nos. 1484, 1485.



No. 1483.

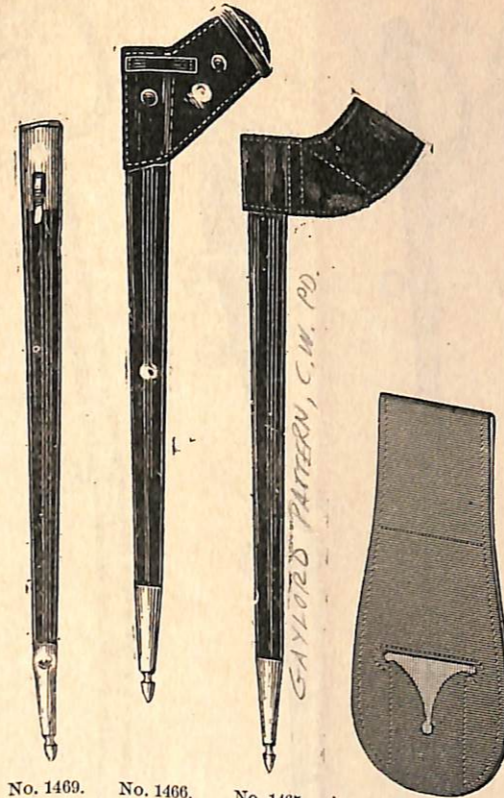
- | | | |
|----------|--|--------------|
| No. 1483 | Knapsack, of enameled muslin, with straps for blankets..... | Each. \$2 10 |
| 1484 | Knapsack, of enameled muslin, with patent leather flap and straps. See illustration..... | 2 50 |
| 1485 | Knapsack, same style as No. 1484, but of better material and finish. See illustration..... | 3 25 |
| 1486 | Knapsack, of enameled leather, extra fine quality. See illustration..... | 5 50 |



WORSTED SASHES.

- | | | |
|----------|---|--------------|
| No. 1510 | Red Knitted Worsted Sash, with tassels, six feet long..... | Each. \$2 50 |
| 1511 | Red Knitted Worsted Sash, with tassels, nine feet long..... | 3 00 |

BAYONET SCABBARDS.



No. 1469. No. 1466. No. 1465. Nos. 1472 to 1473.

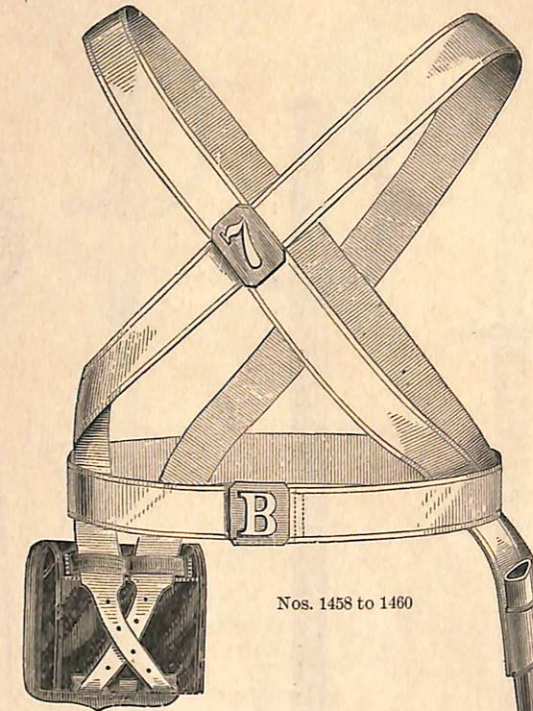
- | | | |
|----------|---|--------------|
| No. 1465 | Leather Bayonet Scabbard, with patent leather Throg for waist belt, brass tip. See illustration..... | Each. \$0 75 |
| 1466 | Leather Bayonet Scabbard, with enameled leather Throg at top for cross belt, brass tip. See illustration..... | 85 |
| 1467 | Leather Bayonet Scabbard, same as No. 1465, but nickel tip..... | 85 |
| 1468 | Leather Bayonet Scabbard, same as No. 1466, but nickel tip..... | 95 |
| 1469 | Leather Bayonet Scabbard, with brass top with hook for leather cross belt, and brass tip..... | 1 00 |
| 1470 | Leather Bayonet Scabbard, same as No. 1469, but nickel mounted..... | 1 25 |
| 1470½ | Steel Bayonet Scabbard, nickelplated, with Throg at top..... | 1 50 |

CARTRIDGE BOXES.

- | | | |
|----------|--|--------------|
| No. 1461 | Patent Leather Cartridge Box; small size. | Each. \$1 25 |
| 1462 | Patent Leather Cartridge Box; medium size..... | 1 35 |
| 1463 | Patent Leather Cartridge Box; large size. | 1 50 |

When ordering please mention whether cartridge boxes are for waist belt, or shoulder belts, of webbing or buff leather.

CROSS BELT EQUIPMENTS.



Nos. 1458 to 1460

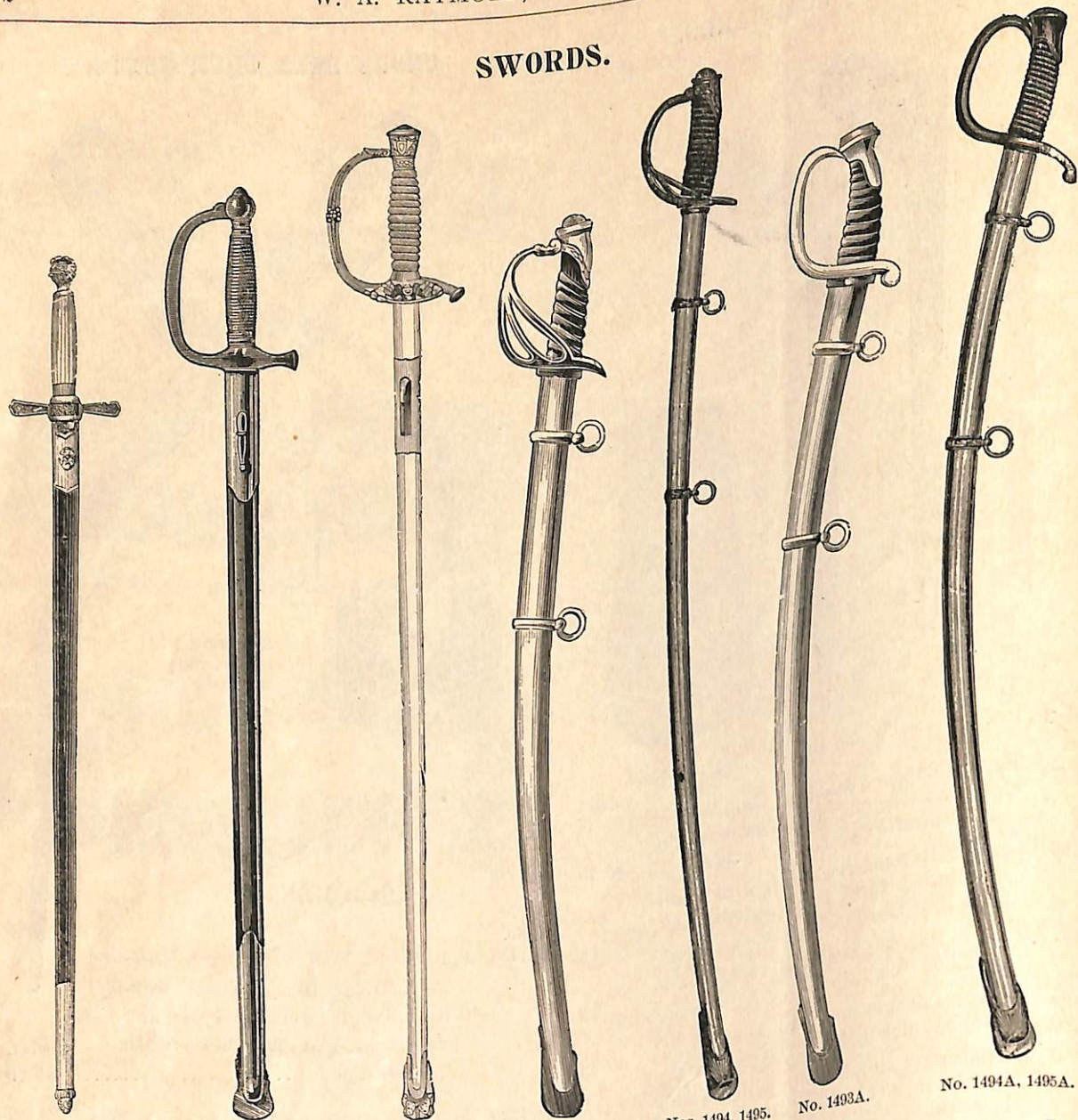
EQUIPMENTS.

- | | | |
|----------|--|-----------------|
| No. 1458 | Full Dress Equipments, consisting of cartridge box, bayonet scabbard, white webbing cross and waist belts, plain belt brass waist and breast plates..... | Per Set. \$3 00 |
| 1459 | Full Dress Equipments, same as No. 1458, but having letter of company on waist plate, and figures of regiment on breast plate. See illustration..... | 3 50 |
| 1460 | Full Dress Equipments, same as No. 1458, but belts of white buff leather..... | 10 00 |

SERGEANTS' THROGS.

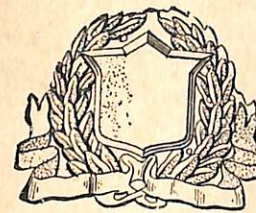
- | | | |
|----------|---|--------------|
| No. 1471 | Patent Leather Throg for Sergeants. See illustration..... | Each. \$0 25 |
| 1472 | Enameled Leather Throg for Sergeants. See illustration..... | 50 |
| 1473 | White Buff Leather Throg for Sergeants.. | 50 |

SWORDS.



- | | | | |
|--------------------|--|--|-------|
| Nos. 1487 to 1489. | | | Each. |
| No. 1490. | | | |
| Nos. 1491 to 1492. | | | |
| No. 1493. | | | |
| Nos. 1494, 1495. | | | |
| No. 1493A. | | | |
| No. 1494A, 1495A. | | | |
-
- | | | | |
|----------|---|-------------------|-------|
| No. 1487 | Sergeant's Sword, brass mounted, leather scabbard, oval steel blade. See illustration..... | \$9 00 | Each. |
| 1488 | Sergeant's Sword, brass mounted, leather scabbard, steel blade, better grade than No. 1487. See illustration..... | \$3 00 | |
| 1489 | Sword, same as No. 1488, but gilt mounted instead of brass. See illustration..... | 4 25 | |
| 1490 | Non-commissioned officer's sword, brass mounted, leather scabbard. See illustration..... | 6 00 | |
| 1491 | Non-commissioned officer's sword, brass mounted, steel scabbard, twist leather grip, with hook. See illustration..... | 6 00 | |
| 1491½ | Sword as No. 1491, but gilt mounted... | 5 00 | |
| 1492 | Non-commissioned officer's sword, gilt mounted, etched steel diamond blade, nicked steel scabbard, fishskin grip... | 7 50 | |
| 1493 | Brass Mounted Cavalry Sabre, polished scabbard, plain blade. See illustration. | 9 00 | Each. |
| 1494 | Brass Mounted Cavalry Sabre, polished and nicked steel scabbard, fine steel blade, light weight. See illustration.. | 12 00 | |
| 1495 | Gilt Mounted Cavalry Sabre, same as No. 1494 in style..... | \$15 00 and 18 00 | |
| 1493A | Brass Mounted Artillery Sabre, same as No. 1493. See illustration .. | 9 00 | |
| 1494A | Brass Mounted Artillery Sabre, same as No. 1494. See illustration..... | 12 00 | |
| 1495A | Gilt mounted Artillery Sabre, same as No. 1495. See illustration.... | \$15 00 and 18 00 | |

Special quotations given on new and old Government Sabres, Equipments, etc.. at very low prices.



No. 342.



No. 326.

- | | | |
|---------|--|--------|
| No. 326 | Brass Helmet Eagle, with figure on shield. | Each. |
| 326a | Gilt Helmet Eagle, with figure on shield.. | \$0 25 |
| 342 | Gilt Metal Wreath and Shield, with figure or letter..... | 50 |
| | | 1 00 |



No. 396.

- | | | |
|---------|---|--------|
| No. 396 | Gilt and burnished New York State Helmet Ornament.. | Each. |
| | | \$0 50 |



No. 353.

- | | | |
|-----|---|------|
| 353 | Gilt and burnished Michigan State Ornament..... | 1 00 |
|-----|---|------|



No. 49.

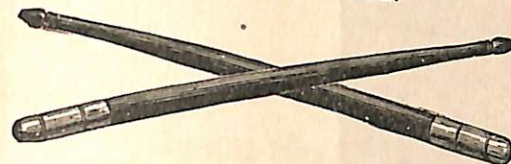
- | | | |
|-----|-------------------------------|----------|
| 49 | Plain Brass Metal Wreath..... | Per Doz. |
| 49a | Gilt Metal Wreath... | \$0 40 |
| | | 50 |



No. 151.

- | | | |
|------|----------------------|------|
| 151 | Brass G.A.R. Wreath, | 0 50 |
| 151a | Gilt G.A.R. Wreath, | 60 |

DRUM STICKS.



- | | | |
|---------|---------------------------------------|-----------|
| No. 571 | Ebony, with plated tips, 17 inch..... | Per Pair. |
| 581 | " plain, 17 " | \$1 50 |
| 591 | Cocoa, with plated tips, 17 " | 75 |
| 601 | " plain, 17 " | 1 50 |
| 611 | Rosewood, polished, 17 " | 60 |
| 621 | " " 14 " | 45 |
| 631 | Maple, plain, 17 " | 38 |
| | | 27 |



No. 397.

- | | | |
|---------|---|--------|
| No. 397 | Gilt and Burnished Special Ornament (as per illustration).... | Each. |
| | | \$1 00 |



No. 345.

- | | | |
|-----|--|------|
| 345 | Gilt and Burnished Metal Rays, with silver wreath and figures or letter..... | 1 25 |
|-----|--|------|



No. 125.

- | | | |
|---------|------------------|----------|
| No. 125 | Brass Bugle..... | Per Doz. |
| 125a | Gilt Bugle..... | \$0 50 |
| | | 75 |



No. 281.

- | | | |
|------|---------------------------|----|
| 281 | Brass Crossed Cannon..... | 50 |
| 281a | Gilt Crossed Cannon, | 75 |



No. 298.

- | | | |
|------|-----------------------|----|
| 298 | Brass Crossed Rifles, | 50 |
| 298a | Gilt Crossed Rifles.. | 75 |



No. 299.

- | | | |
|------|--|------|
| 299 | Brass Crossed Rifles, with letter of company and figure of regiment..... | 1 50 |
| 299a | Gilt Crossed Rifles, as above..... | 2 50 |



No. 131.

- | | | |
|------|----------------------|----|
| 131 | Brass Crossed Sabre. | 50 |
| 131a | Gilt Crossed Sabre.. | 75 |

BASS DRUM STICKS.

- | | | |
|---------|--|--------|
| No. 651 | Rubber Ball..... | Each. |
| 661 | Chamois-covered Balls, Rattan Handles... | \$0 62 |
| | | 75 |

WOOD FIFES, B and C.

- | | | |
|----------|---|--------|
| No. 2961 | Ebony, German Silver Ferrules..... | Each. |
| 2971 | Cocoa, German Silver Ferrules with Amb | \$0 80 |
| 2981 | Cocoa, German Silver Ferrules..... | 1 10 |
| 3001 | Rosewood, Brass Ferrules..... | 70 |
| 3011 | Maple, Brass Ferrules..... | 50 |
| 3011 | Maple, Brass Ferrules, black..... | 35 |
| 3041 | Nickel Fifes, raised holes..... | 1 25 |
| 3051 | German Silver, rubber trimmed..... | 1 60 |
| 3061 | Ebony, with long Ferrules..... | 1 25 |
| 1109 | Nickelplated, B or C Key..... | 1 00 |
| 1109½ | Nickelplated Patented Fife, B, C, D, E, | 25 |
| 1109¾ | Brass Patented Fife, B, C, D, E.... | 20 |

BELT PLATES.

Each.



No. 302 Plain Brass Waist Belt Plate..... \$0 18
 302A Plain Nickelplated Waist Belt Plate..... 25
 302B Plain Goldplated Waist Belt Plate..... 35



241 Brass Waist Belt Plate, with Company letter... 40
 241A Nickelplated Waist Belt Plate, with brass Company letter..... 50
 241B Goldplated Waist Belt, with nickelplated Company letter..... 65



230 Brass Waist Belt Plate, with sunk block Company letter..... 75
 230A Nickelplated Plate, as No. 230..... 85
 230B Goldplated Plate, as No. 230A..... 1 00



310 Plain Brass Breast Plate, for webbing or leather belts..... 18
 310A Plate, as No. 310, but nickelplated..... 25
 310B Plate, as No. 310, but Goldplated..... 35



316 West Point Breast Plate, made of brass..... 25
 Nickelplated..... 30
 Goldplated..... 50



236 Brass Breast Plate, with figure of Regiment on front, made for webbing or leather belts..... 40
 236A Plate, as above, but Nickelplated..... 50
 236B Plate, as above, but goldplated..... 65



237 Brass Breast Plate, with two figures, made for webbing or leather crossed belts..... 50
 237A Plate as above, but nickelplated..... 60
 237B Plate as above, but goldplated..... 75



No. 62 United States Officer's Goldplated Belt Plate, French fastenings, extra fine..... \$1 00



255 New York State Goldplated Belt Plate, extra quality..... 1 00



27 Brass Stamp Square Eagle Belt Plate..... 20



257 Brass Eagle Clasp Belt Buckle..... 35



257A Nickelplated Plate, as No. 257..... 40



257B Goldplated Plate, as No. 257..... 50



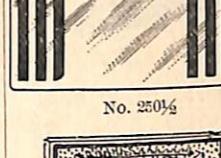
248 Silverplated Police Plate..... 50
 248A Gilt Police Plate..... 65



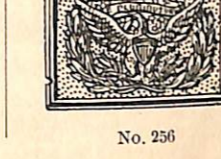
253 Brass G. A. R. Monogram Belt Plate..... 45
 253A Gilt G. A. R. Monogram Belt Plate..... 60



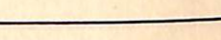
249 1/2 United States Regulation Belt Plate, for Privates, of cast metal in brass..... 33
 Nickelplated..... 37
 Goldplated..... 60



252 Brass G. A. R. Badge Belt Plate..... 45
 252A Gilt G. A. R. Badge Belt Plate..... 60

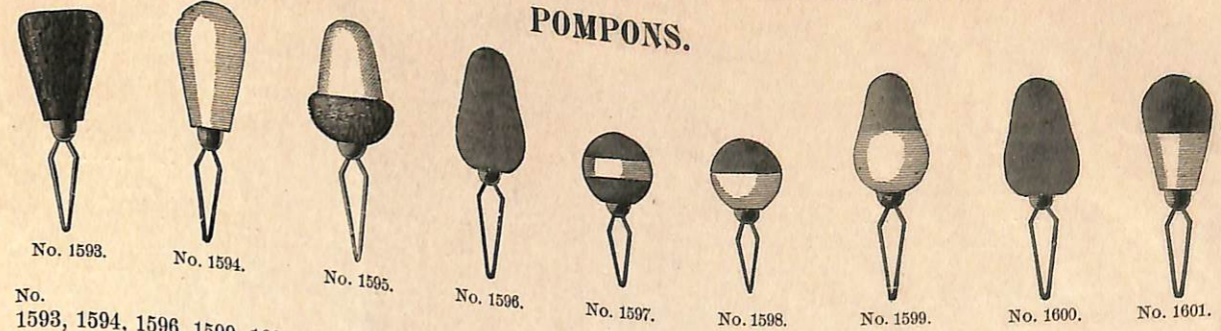


250 1/2 West Point Waist Belt Plate, brass..... 25
 Nickelplated..... 30
 Goldplated..... 50



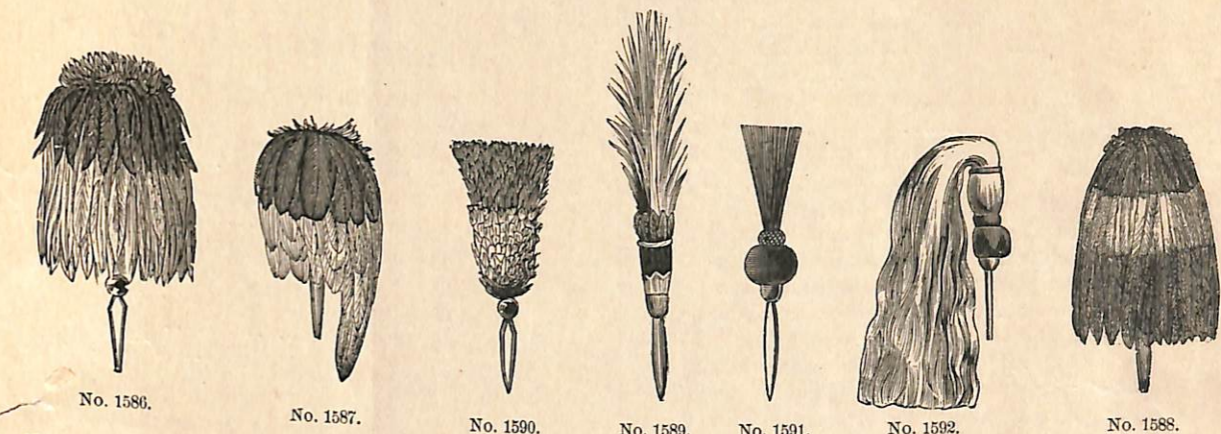
256 United States Officer's Goldplated Belt Plate, French fastenings, beveled edges..... 75

POMPONS.

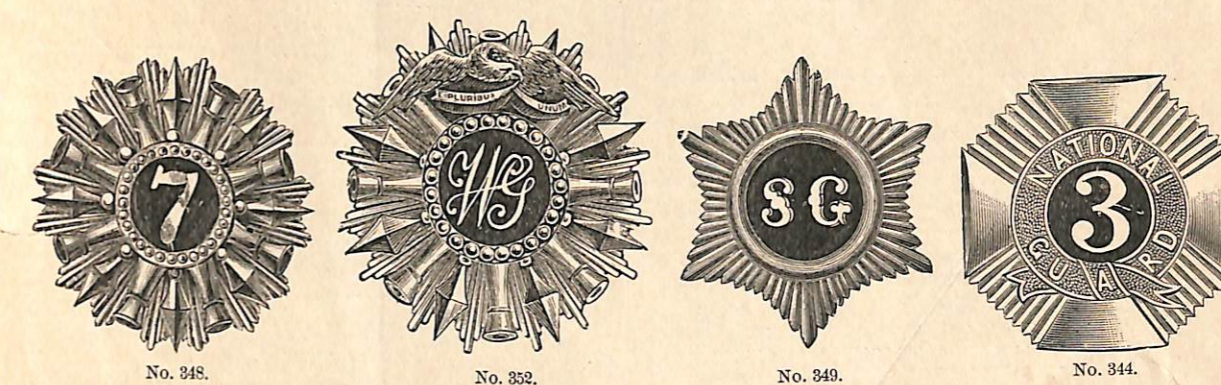


No. 1593, 1594, 1596, 1599, 1600, 1601, Worsted Pompons, usual size, made in styles illustrated above..... \$0 50
 No. 1595 Worsted Combination Acorn Pompon... \$0 75
 No. 1597, 1598. Ball Pompons, any color or colors, 45

PLUMES.



No. 1586 Fountain Coque Plume, medium size..... Each \$3 50
 No. 1587 Drooping Coque Plume, medium size..... 2 50
 No. 1588 Fountain Ostrich Plume, good size, any colors..... 3 50
 No. 1589 Heron Aigrette, of white, with base of any color..... 6 00
 No. 1590 Upright Feather Plume, any color or colors. 6 inch..... \$1 00
 7 "..... 2 00
 8 "..... 3 00
 No. 1591 Upright Hair Plume..... 1 50
 No. 1592 Drooping Horsehair Plume, with ball.... 2 00



No. 344 Gilt and Burnished Hat Ornament, with figure or letter in centre..... Each \$1 00
 No. 348 Gilt and Burnished Metal Ornaments, with figure or letter..... 50
 No. 349 Gilt and Burnished Star Ornament..... \$0 60
 No. 352 Gilt and Burnished Metal Ornament, with figures or letters. (Monograms cost 25 cents extra)..... 60

AMERICAN FLAGS.

SEWED BUNTING.

Width.	Length.	Per Piece.
2 feet by 3 feet		\$1 50
2½ " 4 "		2 25
3 " 5 "		3 15
4 " 6 "		4 30
5 " 8 "		6 00
6 " 9 "		7 50
6 " 12 "		9 00
8 " 12 "		11 50
8 " 15 "		14 25
9 " 14 "		15 00
10 " 15 "		16 00
10 " 18 "		19 50
12 " 18 "		23 00
12 " 20 "		25 00
12 " 24 "		31 00
15 " 24 "		36 00
13 " 25 "		31 00
15 " 25 "		37 00
16 " 26 "		40 00
20 " 30 "		56 00
20 " 36 "		67 00
24 " 40 "		91 00
25 " 45 "		100 00

6 by 6½ U. S. National Regulation Flag..... 4 50
 This flag, trimmed with 2 inch yellow worsted fringe, 7 inch worsted tassels and cord, imitation cherry or walnut staff, with brass spearhead and tube joint, patent leather belt and cover, all complete..... 20 00
 Same Flag, trimmed with 2 inch yellow silk fringe, 7 inch yellow silk tassels and cord, and mounted on real walnut pole with screw joint and 6 inch solid eagle, patent leather belt and cover, all complete 30 00

UNTRIMMED SILK FLAGS.

Machine Sewed Silk Flags, made of fine flag silk, with gold leaf stars.

Width.	Length.	Per Piece.
2 feet by 3 feet		\$6 75
2½ " 4 "		8 00
3 " 5 "		12 00
4 " 6 "		15 00
4¼ " 7 "		18 00
5 " 8 "		25 00
6 " 9 "		35 00
6 " 10 "		38 00
6 " 12 "		41 00
8 " 12 "		55 00
6 by 6½ U.S. National Regulation Flag		25 00

Machine Sewed Silk Flags, made of best banner silk, with either gold leaf or hand sewed transparent silk stars. State which preferred.

4 feet by 6 feet	\$25 00
4½ " 7 "	30 00
5 " 8 "	40 00
6 ft. by 6½ ft. U.S. National Regulation Flag	40 00

Machine Sewed Silk Flags, made of the best banner silk, with hand-embroidered silk stars.

4 feet by 6 feet	\$35 00
4½ " 7 "	40 00
6 ft. by 6½ ft. U.S. National Regulation Flag	50 00

PRINTED MUSLIN FLAGS.

ON STICKS.

No.	Width.	Length.	Per Gross.
1	1¾ inch by 3 inches		\$0 30
2	2¼ " 4 "		36
3	3½ " 6 "		60
4	4¼ " 7½ "		85
5	5¾ " 9½ "		1 50
5½	7 " 11½ "		2 00
No.	Width.	Length.	Per Doz.
6	8½ inches by 14 inches		\$0 24
7	11½ " 18 "		36
7½	12 " 22 "		48
8	17½ " 27½ "		72
9	21 " 36 "		1 25
10	28½ " 43 "		1 80
11	31 " 50 "		2 40
11½	35 " 58 "		2 80
12	40 " 66 "		4 35

PRINTED SILK FLAGS.

ON STAFFS, WITH ORNAMENTS.

Width.	Length.	Per Piece.
2 inches by 3 inches		\$0 06
4½ " 6 "		10
7 " 10 "		20
8 " 12 "		25
12 " 18 "		50
16 " 24 "		75
24 " 36 "		1 60
30 " 48 "		2 25
36 " 60 "		4 00

Machine Sewed Silk Flags, made of fine flag silk, with hand sewed transparent silk stars.

Width.	Length.	Per Piece.
2 feet by 3 feet		\$6 75
2½ " 4 "		8 00
3 " 5 "		12 00
4 " 6 "		15 00
4½ " 7 "		18 00
5 " 8 "		25 00
6 " 9 "		35 00
6 " 10 "		38 00
6 " 12 "		41 00
8 " 12 "		55 00
6 by 6½ ft. U.S. National Regulation Flag		25 00

Best Banner Silk Flags, machine sewed, with gold leaf for transparent silk stars. State which is preferred.

4 feet by 6 feet	\$33 50
4½ " 7 "	40 00
5 " 8 "	53 50
6 " 6½ "	53 50

Best Banner Silk Flags, machine sewed, with hand-embroidered silk stars.

4 feet by 6 feet	\$47 00
4½ " 7 "	53 00
5 " 8 "	67 00
6 " 6½ "	67 00